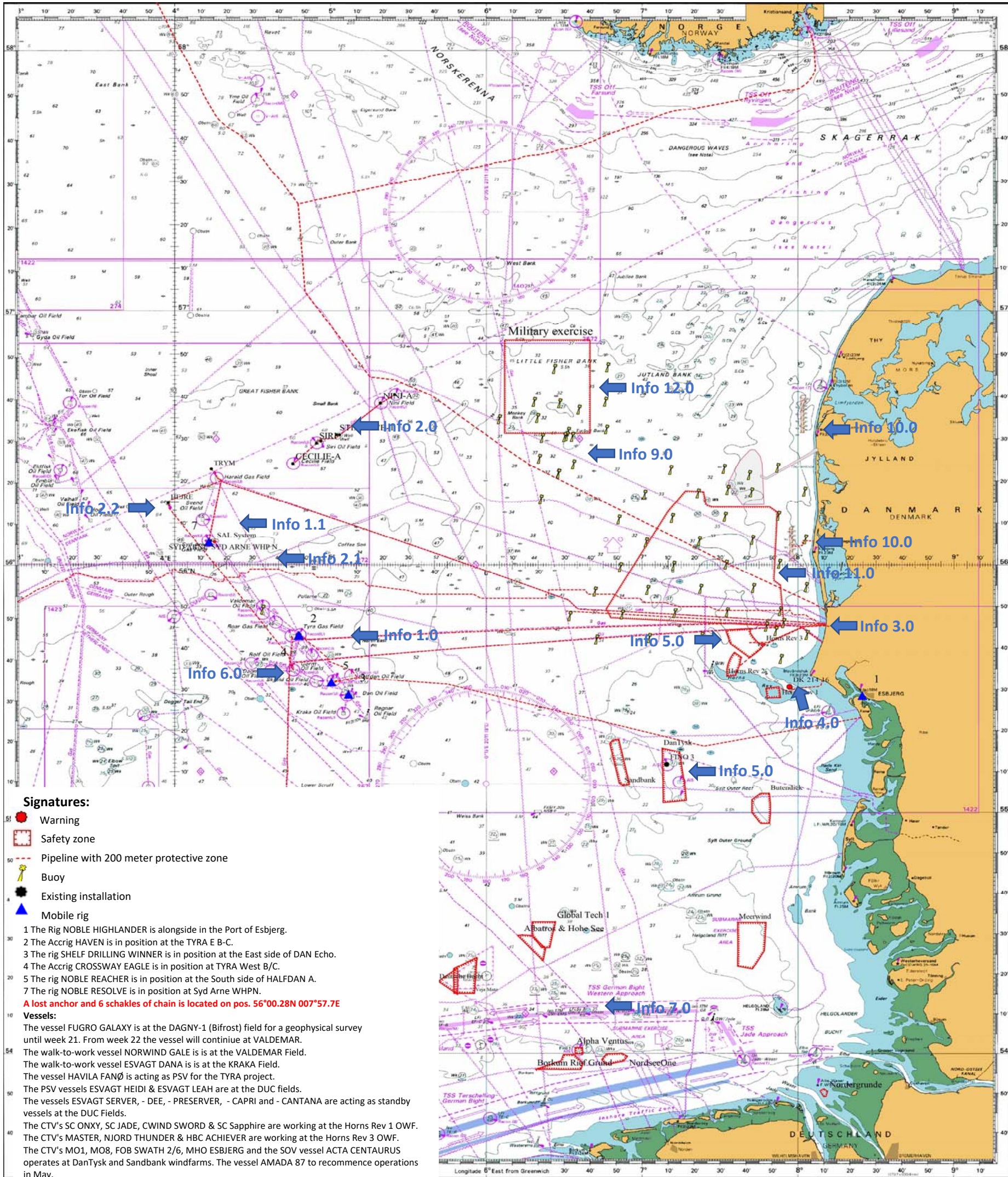




FOGA ApS has on basis of information received from offshore-operators at the North Sea prepared the following newsletter describing present activities:



**Signatures:**

- Warning
- Safety zone
- Pipeline with 200 meter protective zone
- Buoy
- Existing installation
- Mobile rig

- 1 The Rig NOBLE HIGHLANDER is alongside in the Port of Esbjerg.
- 2 The Accrig HAVEN is in position at the TYRA E B-C.
- 3 The rig SHELF DRILLING WINNER is in position at the East side of DAN Echo.
- 4 The Accrig CROSSWAY EAGLE is in position at TYRA West B/C.
- 5 The rig NOBLE REACHER is in position at the South side of HALFDAN A.
- 7 The rig NOBLE RESOLVE is in position at Syd Arne WHPN.

**A lost anchor and 6 schakles of chain is located on pos. 56°00.28N 007°57.7E**

**Vessels:**

The vessel FUGRO GALAXY is at the DAGNY-1 (Bifrost) field for a geophysical survey until week 21. From week 22 the vessel will continue at VALDEMAR.  
 The walk-to-work vessel NORWIND GALE is at the VALDEMAR Field.  
 The walk-to-work vessel ESVAGT DANA is at the KRAKA Field.  
 The vessel HAVILA FANØ is acting as PSV for the TYRA project.  
 The PSV vessels ESVAGT HEIDI & ESVAGT LEAH are at the DUC fields.  
 The vessels ESVAGT SERVER, - DEE, - PRESERVER, - CAPRI and - CANTANA are acting as standby vessels at the DUC Fields.  
 The CTV's SC ONXY, SC JADE, CWINN SWORD & SC Sapphire are working at the Horns Rev 1 OWF.  
 The CTV's MASTER, NJORD THUNDER & HBC ACHIEVER are working at the Horns Rev 3 OWF.  
 The CTV's MO1, MO8, FOB SWATH 2/6, MHO ESBJERG and the SOV vessel ACTA CENTAURUS operates at DanTysk and Sandbank windfarms. The vessel AMADA 87 to recommence operations in May.  
 The vessels SØLØVEN, REYKJANES, SVERDRUPSON, FORTUNA CRANE, FORTUNA KINGFISHER, ARCTIC OCEAN, ARCTIC HUNTER & MERKUR are in the North Sea.  
 The vessel ESVAGT INNOVATOR is the supply vessel at the SIRI & SYD ARNE fields.  
 The vessel ESVAGT KAPPA conducting guardduties at the rig NOBLE RESOLVE.  
 The vessels SAEBORG, SPIRIT of EMDEN and ATLANTICA SERVER are supply vessels for the rig NOBLE RESOLVE.  
 The vessels LEADER, MAKER & WIND ENTERPRISE at Vesterhav Syd & Nord.  
 The following vessels are working nearshore at Vesterhav Nord, WAVEWAKLER 1, EN AVANT 1 and CRC GALAXY & CYGNET.  
 The vessel MERKUR is on station as guard vessel at Vesterhav Nord.

**Chart not to be used for navigation**





**FOGA ApS  
FISHERMENS  
INFORMATION  
ON OFFSHORE  
ACTIVITIES**

**FOGA ApS has on basis of information received from offshore-operators at the North Sea prepared the following newsletter describing present activities:**

Trafikhavnsvej 19  
DK-6700 Esbjerg  
Tel.: +45 75 45 11 44

E-Mail: fish.info@foga.dk  
Web page: www.foga.dk

# NORTH SEA ACTIVITIES

**Update of information**

**Week 20**

**May 14 - 20, 2024**

Next FOGA Info to be distributed May 21, 2024

## Rigs in the Port of Esbjerg

The rig **NOBLE HIGHLANDER** is alongside in the port of Esbjerg.



## Info 1.0



### Vessels:

The vessel **FUGRO GALAXY** is at the **DAGNY-1** (Bifrost) field for a geophysical survey until week 21. From week 22 the vessel will continue at **VALDEMAR**.

There will be a fishery liaison officer (FLO) onboard who are listening to VHF ch 16.

The walk-to-work vessel **NORWIND GALE** is at the **VALDEMAR** Field.

The walk-to-work vessel **ESVAGT DANA** is at the **KRAKA** Field.

The vessel **HAVILA FANØ** is acting as PSV for the **TYRA** project.

The vessels **ESVAGT SERVER**, **ESVAGT PRESERVER**, **ESVAGT CAPRI**, **ESVAGT DEE** and **ESVAGT CANTANA** are acting as standby vessels at the **DUC** Fields.

The vessels **ESVAGT HEIDI** and **ESVAGT LEAH** (PSV) are at the **DUC** Fields.

### TYRA REDEVELOPMENT:

More information on this project can be found on page 4.

### Rigs:

The rig **NOBLE REACHER** is in position at the South side of **HALFDAN A**.

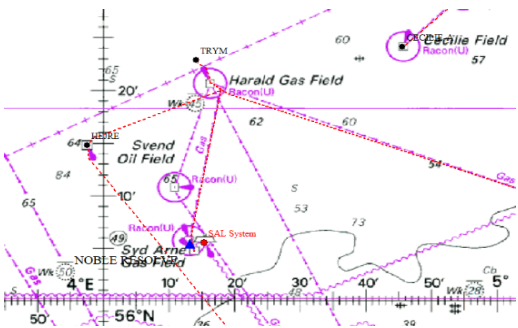
The rig **SHELF DRILLING WINNER** is in position at the East side of **DAN Echo**.

The accommodation rig **CROSSWAY EAGLE** is in position at the **TYRA West** Field between B & C platforms.

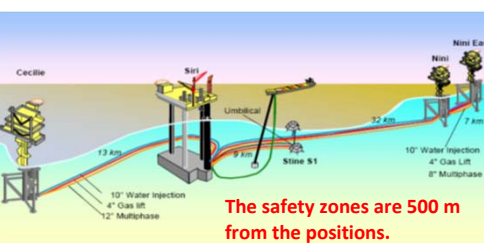
The accommodation rig **HAVEN** is in position at the **TYRA East** between the B & C platforms.



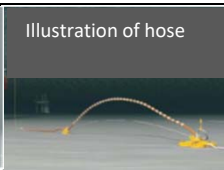
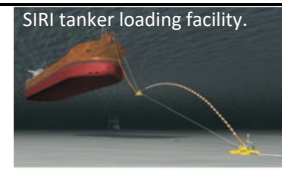
## Info 1.1



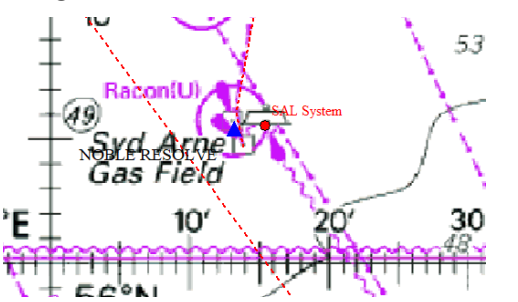
## Info 2.0



**SIRI-field:** 56° 28.96' N 004° 54.67' E  
**The SAL system:** 56° 29.458' N 004° 56.350' E  
**CECILIE-A field:** 56° 24.13' N 004° 45.58' E  
**NINI A-field:** 56° 38.45' N 005° 19.27' E  
**NINI B-field:** 56° 40.49' N 005° 24.74' E  
**STINE field - Subsea installations:**  
**STINE SCB-1:** 56° 30.325' N 005° 02.505' E  
**STINE SCB-2:** 56° 30.985' N 005° 03.493' E



## Info 2.1



### Vessels

The vessel **ESVAGT INNOVATOR** is the supply vessel at the **SIRI** and **Syd Arne** fields.

The vessel **ESVAGT KAPPA** is conducting guard duties at the rig **NOBLE RESOLVE**.

The vessels **SAEBORG**, **SPIRIT of EMDEN** and **ATLANTICA SERVER** are supply vessels for the rig **NOBLE RESOLVE**.

The rig **NOBLE RESOLVE** is in position at the platform **Syd Arne WHPN**.

### SIRI Field

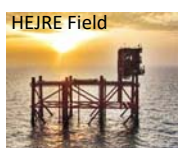
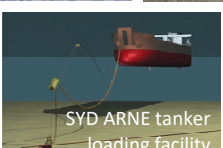
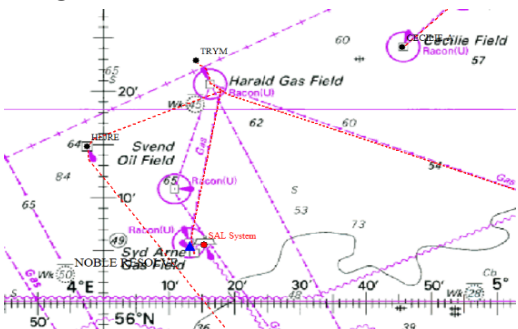
The **SIRI** platform and storage tanks is installed at the position: 56° 28,96' N 004° 54,67' E. The satellite platform **Cecilie** is installed at the position: 56° 24,13' N 004° 45,58' E. The satellite platforms **Nini** and **Nini East** are installed at the following positions: 56° 38,45' N 005° 19,27' E and 56° 40,49' N 005° 24,74' E. A safety zone of 500 m has been established. Mariners have to keep clear of the position. 2 buoys marking the subsea installation **STINE** (SCB-01 and SCB-02) are in position at 56° 30.325' N, 005° 02.505' E and 56° 30.985' N 005° 03.493' E. A safety zone of 500 m has been established. Mariners have to keep clear of the position.

The **SAL** system (the tanker loading facility) at the **SIRI** field, position 56° 29,458' N 004° 56,350' E where tankers are loaded at monthly intervals has a safety zone of 730 m. Mariners have to keep clear of the position.

### SOUTH ARNE field

The storage tank and top site of **SOUTH ARNE field** is installed at position 56° 04,72' N 004° 13,82' E, connected with a bridge to the platform **South Arne WHPE** (Well Head Platform East) at position 56° 04,693' N 004° 13,85' E. The satellite platform **Syd Arne WHPN** (Well Head Platform North) is installed at the position 56° 05,744' N 004° 13,154' E, where a safety zone of 500 meter is established acc. to Offshore safety order. **SOUTH ARNE's** tanker loading facility (the **SAL** system), where tankers are loaded at monthly intervals, is located at WGS-84 pos. 56° 05,55' N 004° 15,37' E with a safety zone of 730 m. Mariners have to keep clear of the position.

## Info 2.2



**Hejre Field** The navigational light at the Hejre Platform in out of service.

At the **HEJRE** Platform a safety zone of 500 m has been established around the position: 56°14,809' N - 003°57,534' E.





**FOGA ApS**  
**FISHERMENS**  
**INFORMATION**  
**ON OFFSHORE**  
**ACTIVITIES**

Trafikhavnsvej 19  
 DK-6700 Esbjerg  
 Tel.: +45 75 45 11 44

E-Mail: fish.info@foga.dk  
 Web page: www.foga.dk

# NORTH SEA ACTIVITIES

**Update of information**  
**Week 20**

**May 14 - 20, 2024**

Next FOGA Info to be distributed May 21, 2024

FOGA ApS has on basis of information received from offshore-operators at the North Sea prepared the following newsletter describing present activities:

## Info 3.0



**Orsted** operates 3 pipelines in the Danish North Sea sector:

20" Oil pipeline from **GORM** to Filsø

24" Gas pipeline from **SYD ARNE** to Blåbjerg.

(via subsea Y-connection with a split from **HARALD**)

30" Gas pipeline from **TYRA E-E** to Kærgård

The gas pipeline is surrounded by a protection zone of 200m on each side of the pipeline pursuant to Danish Maritime Authority Order no. 939 of 27 November 1992 on Protection of Submarine Cables and Pipelines. Within the protection zone anchoring, dredging, boulder removal, and any use of equipment being dragged across the seabed will be prohibited.

## Info 4.0

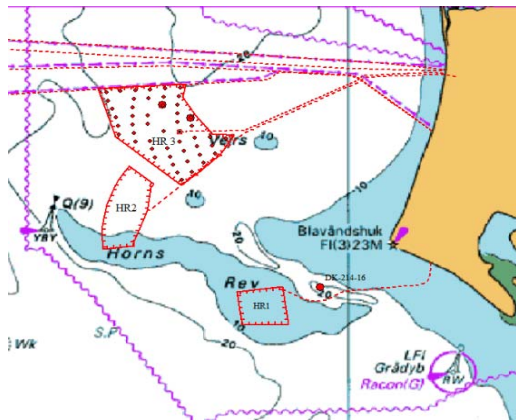


**Danish navigational warning no. DK-214-16**

At the below mentioned position a wreck of a submarine has been discovered containing dangerous ammunition.

Due to safety reasons, Danish Maritime Authority prohibit all unauthorized fishing, anchoring and diving on and within 100 m radius of the wreck in pos. 55 30,62 N - 007 56,84 E. Violation of the prohibition is punishable by fine or prison.

## Info 5.0



### Horns Rev 1 & 3 windfarms

**HR1:** The Crew Transfer Vessels (CTV) **SC ONXY**, **SC JADE**, **CWIND SWORD** & **SC Sapphire** are working at the **Horns Rev 1** OWF.

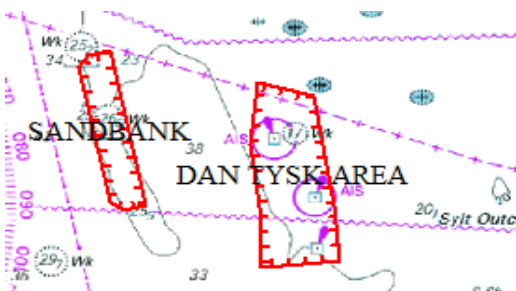
**HR3:** The Crew Transfer Vessels (CTV) **MASTER**, **NJORD THUNDER** & **HBC ACHIEVER** are working at the **Horns Rev 3** OWF.

**Vattenfall OCC Marine Coordination Centre** is in operation 24/7 and can be contacted by VHF CH 16, 17 and 10 the MCC can as well be contacted via the duty-phone no.: +45 32 240 243.

**Vattenfall OCC (MCC)** is monitoring the traffic in the area of all Vattenfall OWF.



List of Dropped objects Horns Rev 3 Offshore Windfarm						
Number	Date	Position	Lost asset	Contractor/ Vessel	Reported by:	Comments / Recovered
2	31-10-2019	55.41.36N 007.35.12E	Acoustic logger	CTV Bolder	MCC	Redeployed on same position
3	17-05-2019	55°43,19N 007°39,22E	12,5m BBC hose recovered 37,5m of BBC hose remaining	Maersk Connector	MCC	Approved by DMA until decommissioning phase
4	19-05-2019	55°43,19N 007°39,2E	Remains of a CPS on seabed	Maersk Connector	MCC	Approved by DMA until decommissioning phase
5	17-05-2019	55°43,19N 007°39,22E	Cable recovery near E03, approx. 58m of cable recovered.	Maersk Connector	MCC	Rest of the cable remains on seabed, approved by DMA until decommissioning phase



### DAN TYSK & SANDBANK (NorTwin) windfarms

**DanTysk** and **Sandbank** windfarms are situated within the marked area.

The Crew Transfer Vessels (CTV) **MO8**, **MO1**, **FOB SWATH 2**, **FOB SWATH 6** & **MHO ESBJERG** plus the (SOV) **ACTA CENTAURUS** is operating at the **SANDBANK** OWP. The vessel **AMADA 87** to recommence operations in May.

**Vattenfall OCC Marine Coordination Centre (MCC)** is in operation 24/7 and can be contacted by VHF CH 16, 17 and 10 the MCC can as well be contacted via the duty-phone no.: +45 32 240 243.



### Vesterhav Syd and Vesterhav Nord offshore windfarm

Further information can be found on page 5.

### FINO 3 - Research Platform

The research platform **FINO 3** was established in 2007/2008 approx. 45 NM West of the island Sylt at the position: 55° 11,7' N 007° 09,5' E.







**FOGA ApS  
FISHERMENS  
INFORMATION  
ON OFFSHORE  
ACTIVITIES**

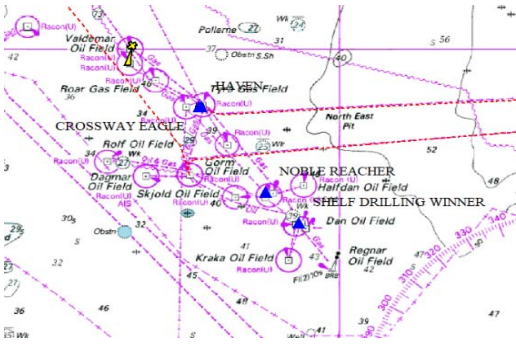
Trafikhavnvej 19  
DK-6700 Esbjerg  
Tel.: +45 75 45 11 44  
E-Mail: fish.info@foga.dk  
Web page: www.foga.dk

# NORTH SEA ACTIVITIES

**Update of information  
Week 20  
May 14 - 20, 2024**  
Next FOGA Info to be distributed May 21, 2024

FOGA ApS has on basis of information received from offshore-operators at the North Sea prepared the following newsletter describing present activities:

## Info 6.0

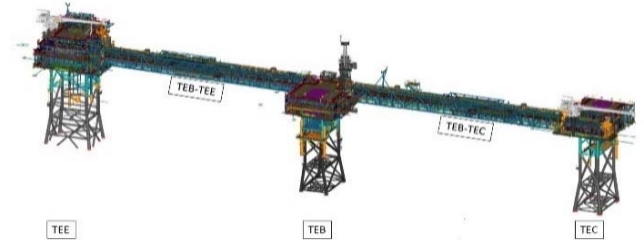


**TotalEnergies**

### TYRA REDEVELOPMENT:

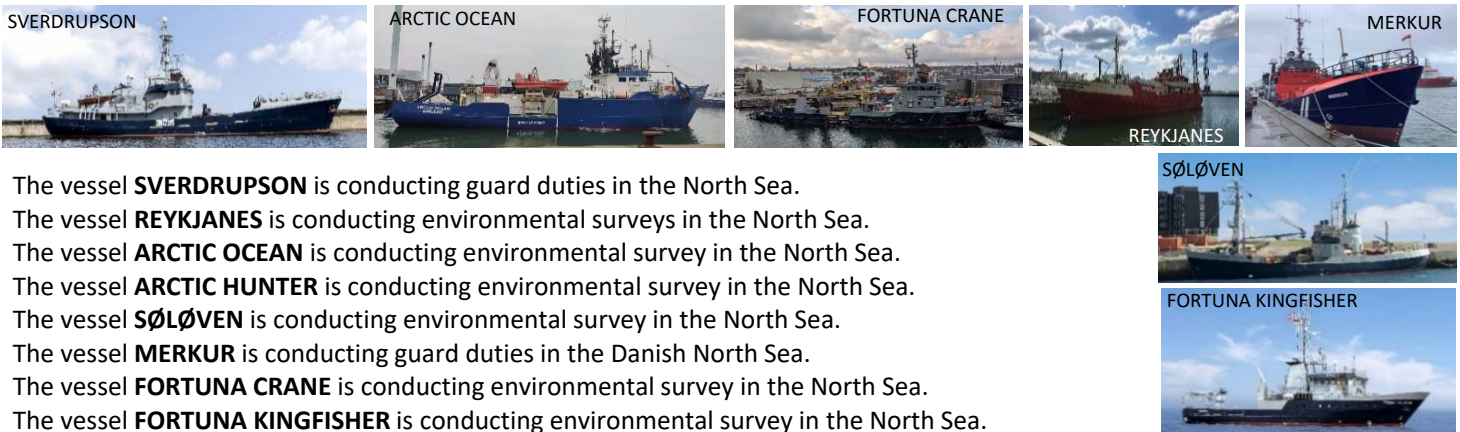
At the TYRA Field two platforms have been established at the below mentioned positions.

TYRA East G: 55° 43,115'N - 004° 47,751'E  
TYRA East H: 55° 43,117'N - 004° 47,695'E



## Info 7.0

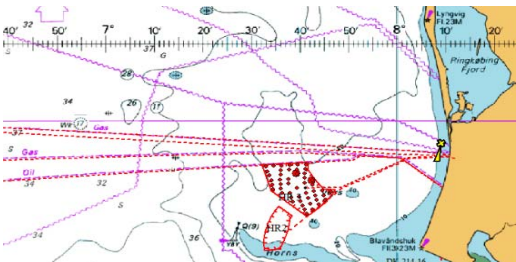
Vessel positions:



The vessel **SVERDRUPSON** is conducting guard duties in the North Sea.  
The vessel **REYKJANES** is conducting environmental surveys in the North Sea.  
The vessel **ARCTIC OCEAN** is conducting environmental survey in the North Sea.  
The vessel **ARCTIC HUNTER** is conducting environmental survey in the North Sea.  
The vessel **SØLØVEN** is conducting environmental survey in the North Sea.  
The vessel **MERKUR** is conducting guard duties in the Danish North Sea.  
The vessel **FORTUNA CRANE** is conducting environmental survey in the North Sea.  
The vessel **FORTUNA KINGFISHER** is conducting environmental survey in the North Sea.



## Info 8.0



### ENERGINET

Energinet has deployed the Baltic Pipe, EPII Branch Pipeline which connects the Europe II gas pipeline with the Danish Westcoast at Houstrup beach. The EPII Branch Pipeline is surrounded by a protection zone of 200m on each side of the pipeline pursuant to Danish Maritime Authority Order no. 939 of 27 November 1992 on Protection of Submarine Cables and Pipelines. Within the protection zone anchoring, dredging, boulder removal, and any use of equipment being dragged across the seabed will be prohibited.

Pipeline positions:  
55° 45.775'N - 007° 59.787'E  
55° 45.597'N - 008° 10.585'E

## Info 9.0

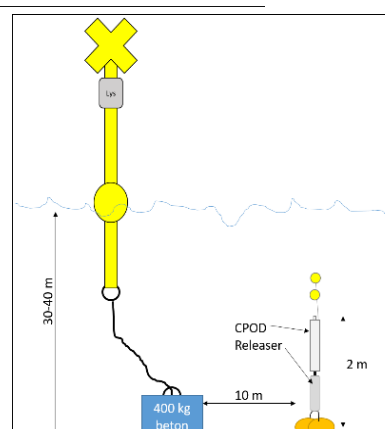


### ENERGINET

During the coming year Energinet are conducting various kind of data collection regarding meteorological and oceanographic data at Lille Fisker Banke (Turbot Banke) at the site of the coming Energy Island. The buoys have been deployed. The planned positions are shown in the figure below.

Betegnelse	Breddegrad	Længdegrad
LiDAR Bøje 1	56° 37,680' N	006° 18,040' E
Bølgebøje 1	56° 30,684' N	006° 31,140' E
Bølgebøje 2	56° 29,574' N	006° 30,648' E
Salinitet & temperaturstreg	56° 20,694' N	006° 27,312' E
LiDAR Bøje 2	56° 20,664' N	006° 27,444' E

Station	Equipment		Buoy	
	Northern	Eastern	Northern	Eastern
NSE-1	56° 14,570'	6° 20,644'	56° 14,557'	6° 20,650'
NSE-2	56° 22,915'	6° 33,179'	56° 22,908'	6° 33,165'
NSE-3	56° 24,237'	6° 20,033'	56° 24,241'	6° 20,006'
NSE-4	56° 29,127'	6° 21,123'	56° 29,131'	6° 21,099'
NSE-5	56° 29,343'	6° 29,817'	56° 29,323'	6° 29,821'
NSE-6	56° 29,401'	6° 32,772'	56° 29,390'	6° 32,769'
NSE-7	56° 31,210'	6° 45,870'	56° 31,199'	6° 45,887'
NSE-8	56° 33,634'	6° 04,605'	56° 33,623'	6° 04,596'
NSE-9	56° 33,904'	6° 19,348'	56° 33,919'	6° 19,302'
NSE-10	56° 35,893'	6° 35,256'	56° 35,898'	6° 35,245'
NSE-11	56° 37,369'	6° 27,852'	56° 37,370'	6° 27,807'
NSE-12	56° 37,739'	6° 45,477'	56° 37,732'	6° 45,452'
NSE-13	56° 45,432'	6° 25,814'	56° 45,412'	6° 25,780'
NSE-14	56° 45,810'	6° 46,353'	56° 45,805'	6° 46,351'







**FOGA ApS**  
**FISHERMENS**  
**INFORMATION**  
**ON OFFSHORE**  
**ACTIVITIES**

Trafikhavnvej 19  
 DK-6700 Esbjerg  
 Tel.: +45 75 45 11 44  
 E-Mail: fish.info@foga.dk  
 Web page: www.foga.dk

# NORTH SEA ACTIVITIES

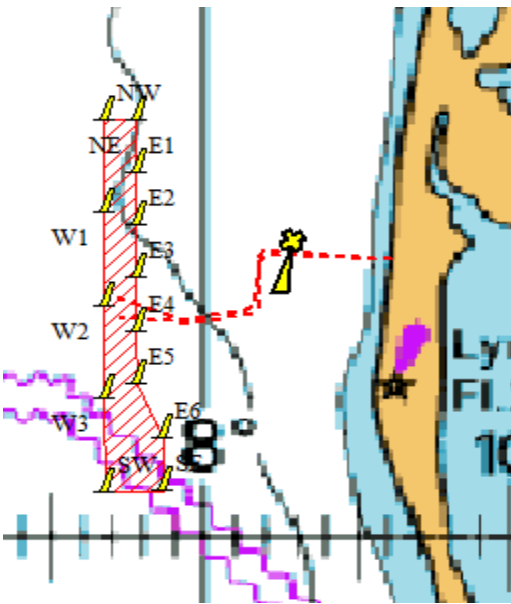
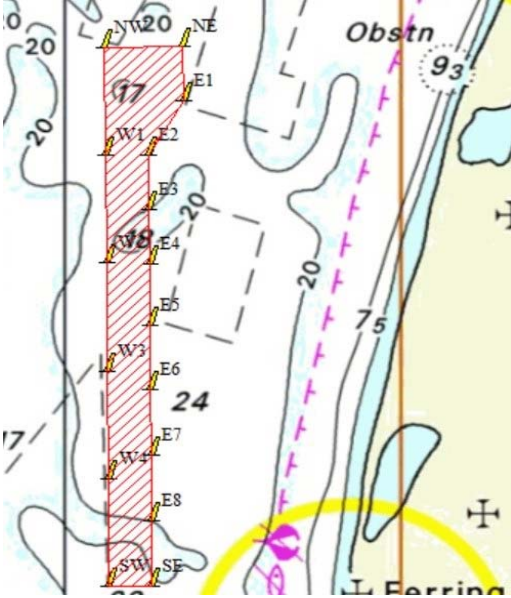
**Update of information**  
**Week 20**  
**May 14 - 20, 2024**

Next FOGA Info to be distributed May 21, 2024

FOGA ApS has on basis of information received from offshore-operators at the North Sea prepared the following newsletter describing present activities:

## Info 10.0

### VATTENFALL



#### Vesterhav Syd and Vesterhav Nord offshore windfarm

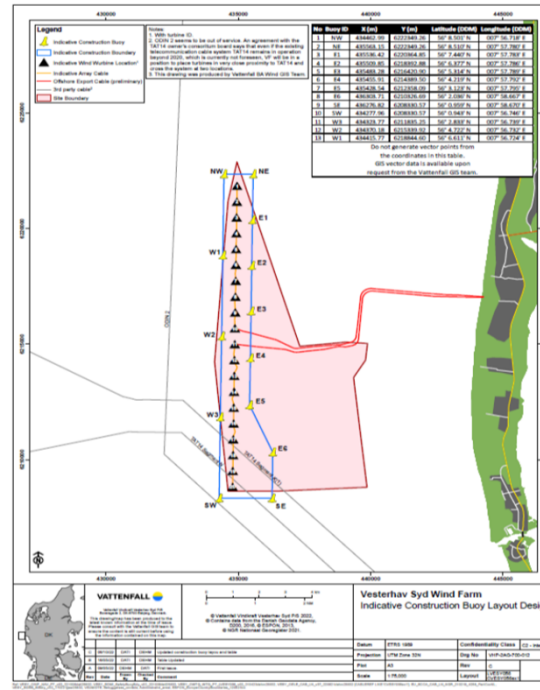
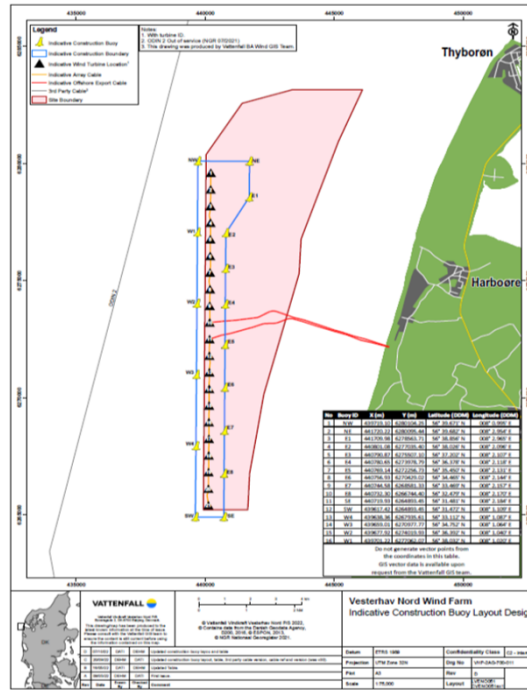
The company Vattenfall has established the offshore windfarms Vesterhav Syd and Vesterhav Nord. The Crew Transfer Vessels (CTV) **LEADER** and **MAKER** as well as the vessel **WIND ENTERPRISE** are working at the Vesterhav Nord & Syd. The following vessels are working nearshore at Vesterhav Nord, the barge **WAVEWALKER 1**, the tugboat **EN AVANT 1** and support boats **CRC GALAXY & CYGNET**.

The vessel **MERKUR** is on station as guard vessel at Vesterhav Nord listening to VHF ch. 16.

The areas where the offshore windfarms will be established are marked with buoys.

2 submarine cables has been deployed between below mentioned positions:

1)	56° 05,700'N - 008° 06,180'E	8)	56° 05,700'N - 008° 06,180'E
2)	56° 05,880'N - 008° 01,980'E	9)	56° 05,820'N - 008° 02,100'E
3)	56° 05,760'N - 008° 01,800'E	10)	56° 05,640'N - 008° 01,860'E
4)	56° 04,740'N - 008° 01,620'E	11)	56° 04,680'N - 008° 01,740'E
5)	56° 04,620'N - 008° 01,320'E	12)	56° 04,560'N - 008° 01,500'E
6)	56° 04,440'N - 007° 59,400'E	13)	56° 04,380'N - 007° 59,520'E
7)	56° 04,920'N - 007° 57,180'E	14)	56° 04,440'N - 007° 59,040'E
		15)	56° 04,500'N - 007° 57,240'E



Vesterhav Syd - NAV Buoy Coordinates (ETRS89 UTM Zone 32N)					
No	Buoy ID	X (m)	Y (m)	Latitude (DDM)	Longitude (DDM)
1	NW	434462,99	6222349,26	56° 8.501' N	007° 56.718' E
2	NE	435563,15	6222349,26	56° 8.510' N	007° 57.780' E
3	E1	435536,42	6220364,85	56° 7.440' N	007° 57.783' E
4	E2	435509,85	6218392,88	56° 6.377' N	007° 57.786' E
5	E3	435483,28	6216420,90	56° 5.314' N	007° 57.789' E
6	E4	435455,91	6214389,50	56° 4.219' N	007° 57.792' E
7	E5	435428,54	6212358,09	56° 3.123' N	007° 57.795' E
8	E6	436303,71	6210326,69	56° 2.036' N	007° 58.667' E
9	SE	436276,82	6208330,57	56° 0.959' N	007° 58.670' E
10	SW	434277,96	6208330,57	56° 0.943' N	007° 56.746' E
11	W3	434323,77	6211835,25	56° 2.833' N	007° 56.739' E
12	W2	434370,18	6215339,92	56° 4.722' N	007° 56.732' E
13	W1	434415,77	6218844,60	56° 6.611' N	007° 56.724' E

Vesterhav Nord - NAV Buoy Coordinates (ETRS89 UTM Zone 32N)					
No	Buoy ID	X (m)	Y (m)	Latitude (DDM)	Longitude (DDM)
1	NW	439719,10	6280104,25	56° 39.671' N	008° 0.995' E
2	NE	441720,22	6280095,44	56° 39.682' N	008° 2.954' E
3	E1	441709,98	6278563,71	56° 38.856' N	008° 2.965' E
4	E2	440801,08	6277035,40	56° 38.026' N	008° 2.096' E
5	E3	440790,87	6275507,10	56° 37.202' N	008° 2.107' E
6	E4	440780,65	6273978,79	56° 36.378' N	008° 2.118' E
7	E5	440769,14	6272256,73	56° 35.450' N	008° 2.131' E
8	E6	440756,93	6270429,02	56° 34.465' N	008° 2.144' E
9	E7	440744,58	6268581,33	56° 33.469' N	008° 2.157' E
10	E8	440732,30	6266744,40	56° 32.479' N	008° 2.170' E
11	SE	440719,93	6264893,45	56° 31.481' N	008° 2.184' E
12	SW	439617,42	6264893,45	56° 31.472' N	008° 1.109' E
13	W4	439638,36	6267935,61	56° 33.112' N	008° 1.087' E
14	W3	439659,01	6270977,77	56° 34.752' N	008° 1.064' E
15	W2	439677,92	6274019,93	56° 36.392' N	008° 1.040' E
16	W1	439701,22	6277062,07	56° 38.032' N	008° 1.020' E

At below mentioned positions 2 wave rider buoys are deployed:  
**Wave Rider Buoy Positions**

	UTM N ETRS89	UTM ETRS89	Latitude ETRS89	Longitude ETRS89
Vesterhav North	441334,76	6279117,20	56° 39.152' N	008° 02.590' E
Vesterhav South	435967,98	6210245,14	56° 01.989' N	007° 58.345' E







**FOGA ApS**  
**FISHERMENS**  
**INFORMATION**  
**ON OFFSHORE**  
**ACTIVITIES**

Trafikhavnvej 19  
 DK-6700 Esbjerg  
 Tel.: +45 75 45 11 44  
 E-Mail: fish.info@foga.dk  
 Web page: www.foga.dk

# NORTH SEA ACTIVITIES

**Update of information**  
**Week 20**  
**May 14 - 20, 2024**  
 Next FOGA Info to be distributed May 21, 2024

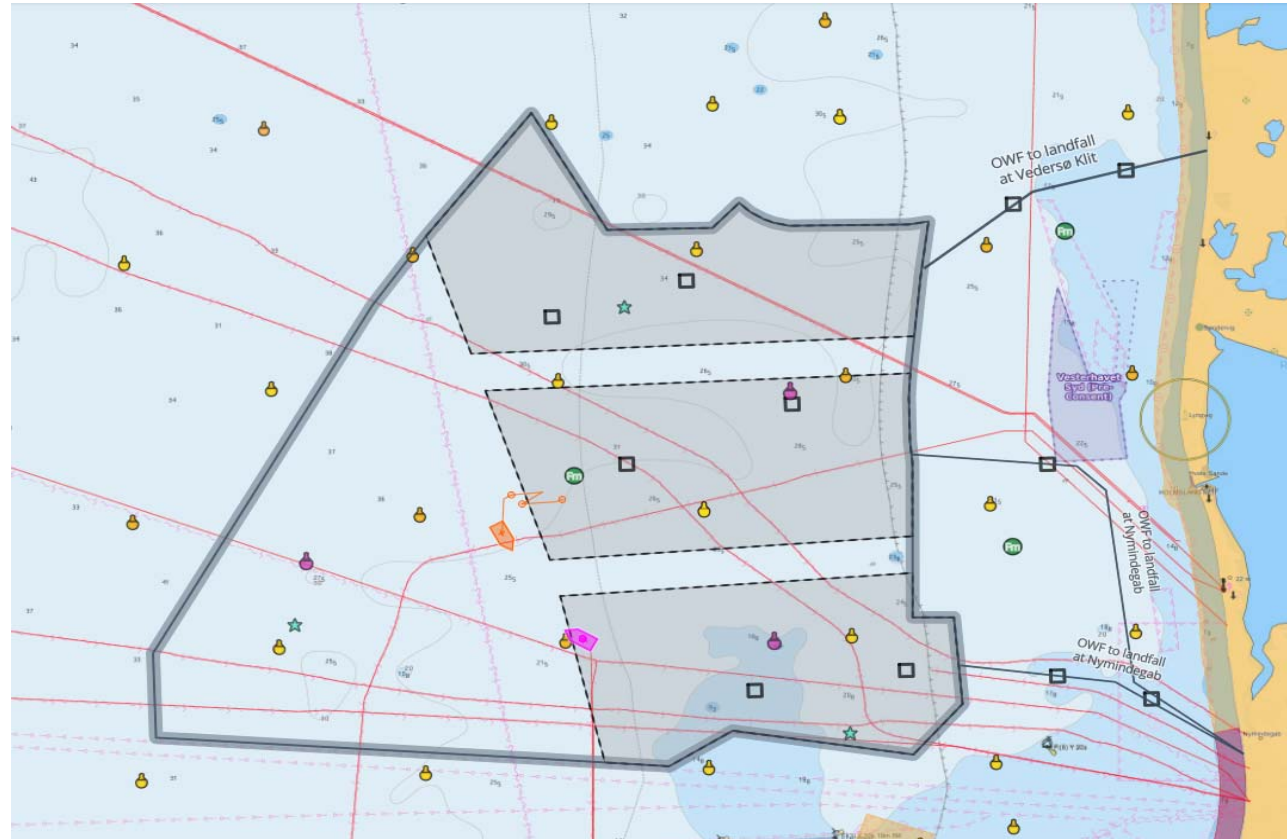
FOGA ApS has on basis of information received from offshore-operators at the North Sea prepared the following newsletter describing present activities:

## Info 11.0



## ENERGINET

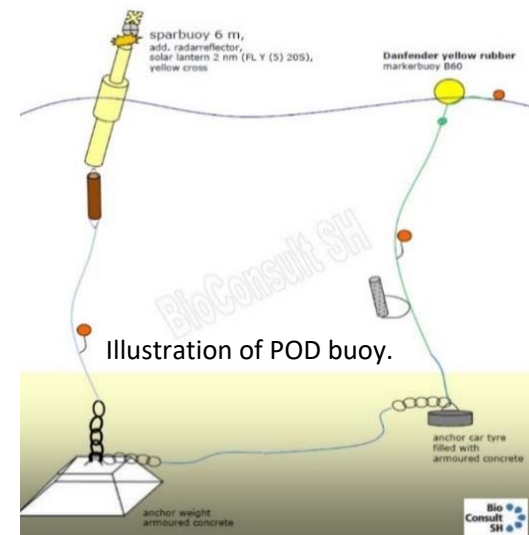
Energinet are conducting surveys in the waters West of Hvide Sande. The working area can be seen at the below shown chart.



Energinet has deployed a number of buoys at the below mentioned positions:

Buoy positions at Nordsøen I (MH2030) - updated March 2024

Pos_ID	Mooring	Latitude	Longitude	Pos_ID	Mooring	Latitude	Longitude	Pos_ID	Mooring	Latitude	Longitude
HR3_1	Acoustic Release	55° 42.8844' N	7° 36.468' E	NS13_S	Sparbuoy	56° 10.149' N	7° 11.2224' E	NS31_S	Sparbuoy	56° 22.0614' N	7° 51.7884' E
HR3_2	Acoustic Release	55° 38.9118' N	7° 40.3476' E	NS14_S	Sparbuoy	56° 21.5262' N	7° 10.5306' E	NS32_S	Sparbuoy	55° 42.117' N	8° 3.0702' E
HR3_3/NS23	Acoustic Release	55° 42.0702' N	7° 42.8472' E	NS15_S	Sparbuoy	55° 41.7066' N	7° 22.5954' E	NS33_S	Sparbuoy	55° 53.5614' N	8° 2.8008' E
HR3_4_S	Sparbuoy	55° 44.1342' N	7° 47.4366' E	NS16_S	Sparbuoy	55° 53.1222' N	7° 22.1184' E	NS34_S	Sparbuoy	56° 4.959' N	8° 2.523' E
HR3_5_S	Sparbuoy	55° 43.0236' N	7° 51.1368' E	NS17_S	Sparbuoy	56° 4.6296' N	7° 21.6066' E	NS35_S	Sparbuoy	56° 16.431' N	8° 2.2134' E
HR3_6_S	Sparbuoy	55° 44.9118' N	7° 54.0678' E	NS18_S	Sparbuoy	56° 15.99498' N	7° 21.13998' E	T2_S	Sparbuoy	56° 16.8' N	7° 32.6274' E
NS1_S	Sparbuoy	55° 46.5702' N	6° 31.6026' E	NS19_S	Sparbuoy	55° 47.5308' N	7° 32.3634' E	T3/NS26_S	Sparbuoy	55° 32.1276' N	6° 40.2746' E
NS2_S	Sparbuoy	55° 52.4862' N	6° 41.4606' E	NS20_S	Sparbuoy	55° 58.9602' N	7° 31.9902' E	T3/NS26_S	Sparbuoy	56° 16.2288' N	7° 41.6838' E
NS3_S	Sparbuoy	55° 41.0508' N	6° 42.0948' E	NS20_S	Sparbuoy	55° 58.968' N	7° 31.9716' E	T4_S	Sparbuoy	56° 20.43' N	7° 40.65' E
NS4_S	Sparbuoy	55° 46.947' N	6° 51.914' E	NS21_S	Sparbuoy	56° 10.407' N	7° 31.4964' E	HR3_noise	Acoustic Release	55° 41.3568' N	7° 35.1048' E
NS5_S	Sparbuoy	55° 58.3746' N	6° 51.2862' E	NS22_S	Sparbuoy	56° 21.836' N	7° 31.197' E				
NS6_S	Sparbuoy	56° 9.8052' N	6° 50.649' E	NS24_S	Sparbuoy	55° 53.3646' N	7° 42.4986' E				
NS7_S	Sparbuoy	55° 41.4036' N	7° 2.3454' E	NS25_S	Sparbuoy	56° 4.8606' N	7° 42.078' E				
NS8_S	Sparbuoy	55° 52.8738' N	7° 1.653' E	NS27_S	Sparbuoy	55° 36.312' N	7° 53.1102' E				
NS9_S	Sparbuoy	56° 4.2606' N	7° 1.1724' E	NS28_S	Sparbuoy	55° 47.7672' N	7° 52.7904' E				
NS10_S	Sparbuoy	56° 15.699' N	7° 0.5958' E	NS29_S	Sparbuoy	55° 59.2038' N	7° 52.4364' E				
NS11_S	Sparbuoy	55° 47.2776' N	7° 12.1782' E	NS30_S	Sparbuoy	56° 10.582' N	7° 52.12698' E				
NS12_S	Sparbuoy	55° 58.6998' N	7° 11.739' E								



## INFO 12.0



### Royal Danish Air Force and Fighter Wing Skrydstrup

The Royal Danish Air Force and Fighter Wing Skrydstrup are planning the annual F-16 live missile exercise FALCON in the North Sea. The missile shooting exercise will take place within calendar week 20, Wednesday, May 15 and Thursday, May 16, 2024 and a restricted/danger area is established, and mariners are requested to keep clear of the area.

The restricted area will be in force from May 15 - May 17, 2024 from 0830 – 1600 hrs. (local time).

The restricted area consists of an 18x22 NM wide area as mentioned below (WGS84 in Lat/Long Degrees, Decimal Minutes DDM):

- N56 53.30 E006 40.00
- N56 53.30 E006 07.00
- N56 31.30 E006 07.00
- N56 31.30 E006 40.00

The exercise will include F-16 fighter jets and C-130 airplanes and flares as targets for the missiles in the air space above the area.

This newsletter and infochart has been prepared on request from the operators in the North Sea and is distributed via E-mail to all fishing vessels and interested parties around the North Sea. Please also visit FOGA's website www.foga.dk. E-mail fish.info@foga.dk to subscribe or unsubscribe. Please also notice that the size of the newsletter as a pdf file is approx. 1 mb.