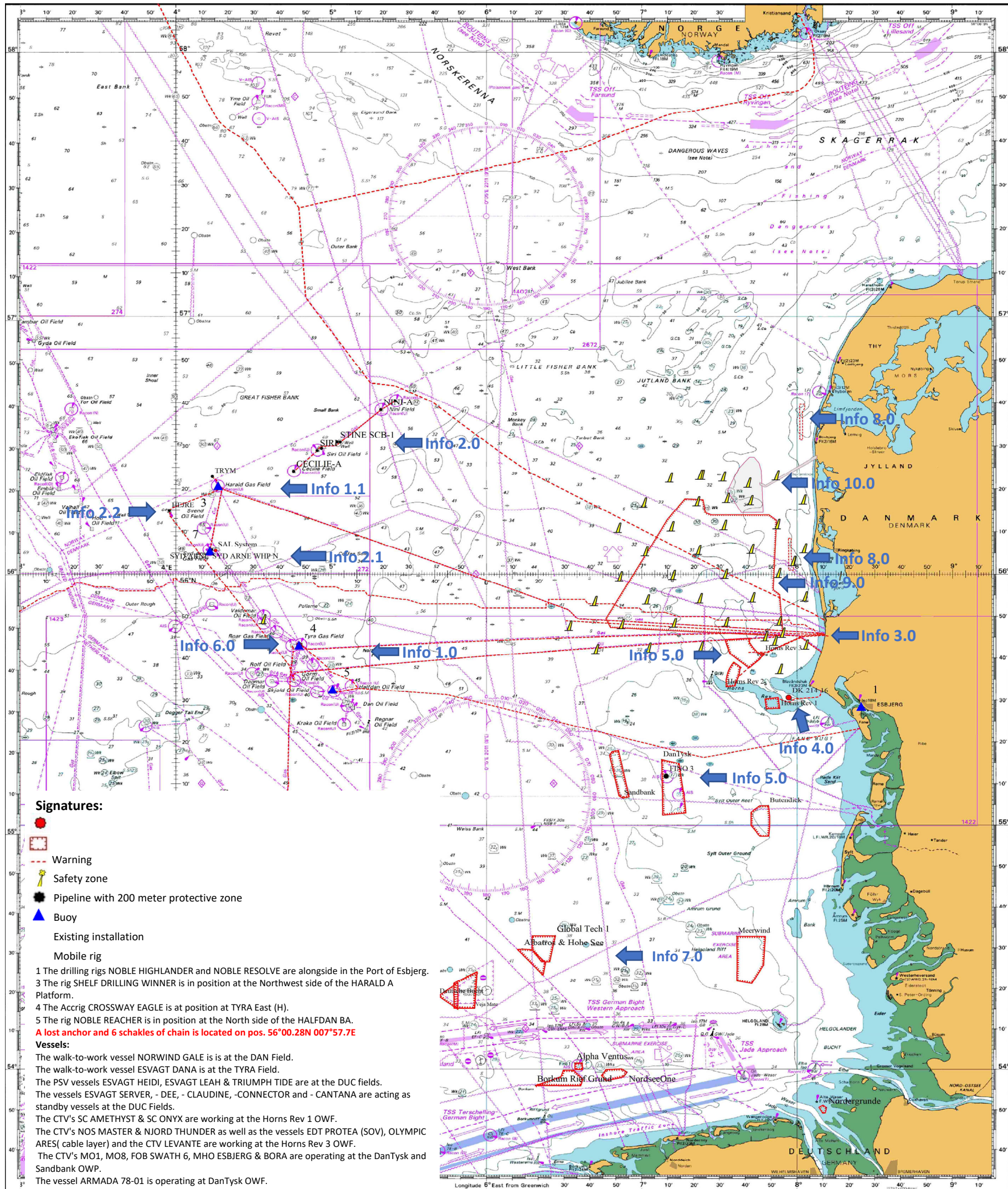




NORTH SEA ACTIVITIES

FOGA ApS has on basis of information received from offshore-operators at the North Sea prepared the following newsletter describing present activities:



Signatures:

- Warning
- Safety zone
- Pipeline with 200 meter protective zone
- Buoy
- Existing installation
- Mobile rig

- 1 The drilling rigs NOBLE HIGHLANDER and NOBLE RESOLVE are alongside in the Port of Esbjerg.
- 3 The rig SHELF DRILLING WINNER is in position at the Northwest side of the HARALD A Platform.
- 4 The Accrig CROSSWAY EAGLE is at position at TYRA East (H).
- 5 The rig NOBLE REACHER is in position at the North side of the HALFDAN BA.

A lost anchor and 6 shackles of chain is located on pos. 56°00.28N 007°57.7E

Vessels:

- The walk-to-work vessel NORWIND GALE is at the DAN Field.
- The walk-to-work vessel ESVA GT DANA is at the TYRA Field.
- The PSV vessels ESVA GT HEIDI, ESVA GT LEAH & TRIUMPH TIDE are at the DUC fields.
- The vessels ESVA GT SERVER, - DEE, - CLAUDINE, -CONNECTOR and - CANTANA are acting as standby vessels at the DUC Fields.
- The CTV's SC AMETHYST & SC ONYX are working at the Horns Rev 1 OWF.
- The CTV's NOS MASTER & NJORD THUNDER as well as the vessels EDT PROTEA (SOV), OLYMPIC ARES(cable layer) and the CTV LEVANTE are working at the Horns Rev 3 OWF.
- The CTV's MO1, MO8, FOB SWATH 6, MHO ESBJERG & BORA are operating at the DanTysk and Sandbank OWP.
- The vessel ARMADA 78-01 is operating at DanTysk OWF.
- The vessel ACTA CENTAURUS is operating at the Sandbank OWP.
- The vessels FORTUNA CRANE, FORTUNA PUFFIN, SØLØVEN, REYKJANES, SVERDRUPSON & ARCTIC HUNTER are in the North Sea.
- The vessel ESVA GT INNOVATOR is the supply vessel at the SIRI & SYD ARNE fields.
- The ROV support vessel ATLANTIS DWELLER is scheduled to perform subsea inspection on all INEOS installations and interfield pipelines. The inspections are expected to start end of week 39 and last for 4-5 weeks.
- The vessels NOS LEADER & NOS MAKER at Vesterhav Syd & Nord.
- The vessels LIFTMOOR, SANDPIPER og CATALINA are working for at shore based survey close to the shore North of Thorsminde.

Chart not to be used for navigation



**FOGA ApS
FISHERMENS
INFORMATION
ON OFFSHORE
ACTIVITIES**

FOGA ApS has on basis of information received from offshore-operators at the North Sea prepared the following newsletter describing present activities:

Trafikhavnsvej 19
DK-6700 Esbjerg
Tel.: +45 75 45 11 44

E-Mail: fish.info@foga.dk
Web page: www.foga.dk

NORTH SEA ACTIVITIES

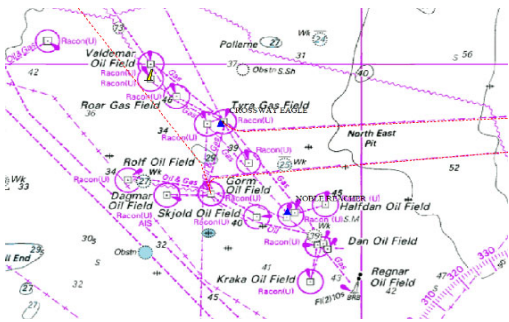
**Update of information
Week 38
September 17 - 23, 2024**
Next FOGA Info to be distributed September 24, 2024

Rigs in the Port of Esbjerg

The rigs **NOBLE HIGHLANDER** and **NOBLE RESOLVE** are alongside in the port of Esbjerg.

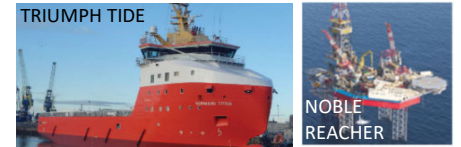


Info 1.0



Vessels:

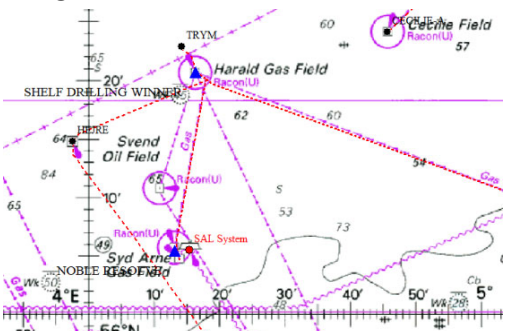
The walk-to-work vessel **NORWIND GALE** is at the **DAN** Field.
The walk-to-work vessel **ESVAGT DANA** is at **TYRA** Field.
The vessels **ESVAGT SERVER**, **ESVAGT CLAUDINE**, **ESVAGT DEE**, **ESVAGT CONNECTOR** and **ESVAGT CANTANA** are acting as standby vessels at the **DUC** Fields.
The vessels **ESVAGT HEIDI** and **ESVAGT LEAH** (PSV) are at the **DUC** Fields.
The vessel **TRIUMPH TIDE** is acting as PSV for the **HARALD** Field.



TYRA REDEVELOPMENT:

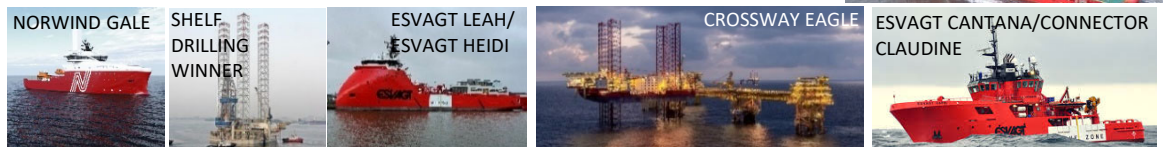
More information on this project can be found on page 4.

Info 1.1

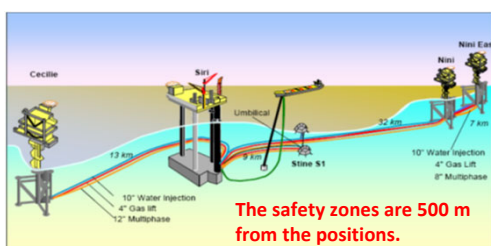
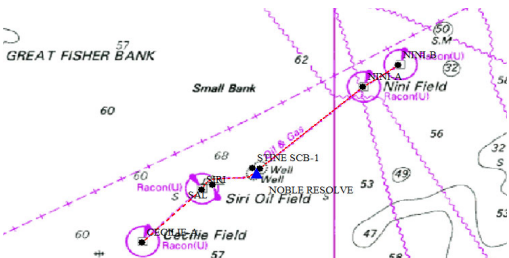


Rigs:

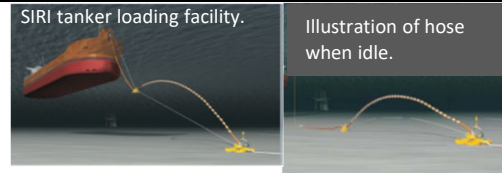
The rig **NOBLE REACHER** is in position at the North side of the **HALFDAN BA**.
The rig **SHELF DRILLING WINNER** is in position at the Northwest side of the **HARALD A** Platform.
The accommodation rig **CROSSWAY EAGLE** is in position on the South side of the **TYRA East (H)** Platform.



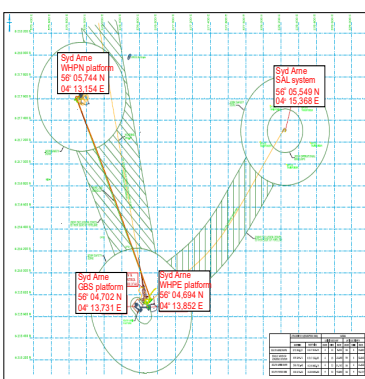
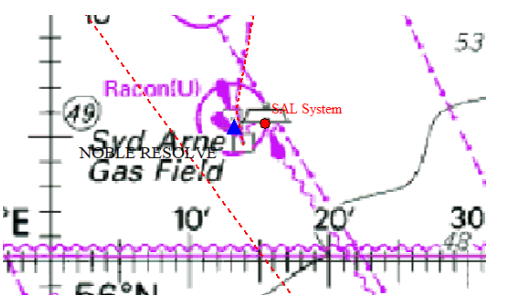
Info 2.0



SIRI-field: 56° 28.96' N 004° 54.67' E
The SAL system: 56° 29.458' N 004° 56.350' E
CECILIE-A field: 56° 24.13' N 004° 45.58' E
NINI A-field: 56° 38.45' N 005° 19.27' E
NINI B-field: 56° 40.49' N 005° 24.74' E
STINE field - Subsea installations:
STINE SCB-1: 56° 30.325' N 005° 02.505' E
STINE SCB-2: 56° 30.985' N 005° 03.493' E



Info 2.1



Vessels

The vessel **ESVAGT INNOVATOR** is the supply vessel at the **SIRI** and **Syd Arne** fields.
The ROV support vessel **ATLANTIS DWELLER** is scheduled to perform subsea inspection on all installations and interfield pipelines. The inspection is expected to start end of week 39 and last for 4-5 weeks.
The vessel **POUL LÖWENØRN** will be replacing two marker buoys at the **STINE 1** and **2** Subsea installation between September 24-30th.

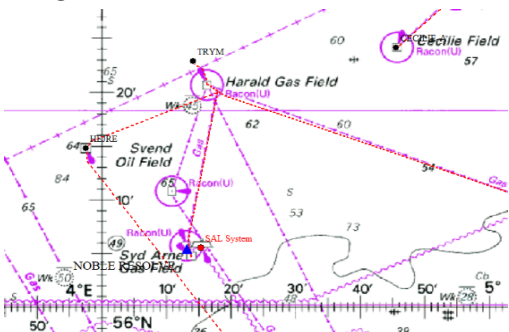
SIRI Field

The **SIRI** platform and storage tanks is installed at the position: 56° 28,96' N 004° 54,67' E. The satellite platform **Cecilie** is installed at the position: 56° 24,13' N 004° 45,58' E. The satellite platforms **Nini** and **Nini East** are installed at the following positions: 56° 38,45' N 005° 19,27' E and 56° 40,49' N 005° 24,74' E. A safety zone of 500 m has been established. Mariners have to keep clear of the position.
2 buoys marking the subsea installation **STINE** (SCB-01 and SCB-02) are in position at 56° 30.325' N, 005° 02.505' E and 56° 30.985' N 005° 03.493' E. A safety zone of 500 m has been established. Mariners have to keep clear of the position.
The **SAL** system (the tanker loading facility) at the **SIRI** field, position 56° 29,458' N 004° 56,350' E where tankers are loaded at monthly intervals has a safety zone of 730 m. Mariners have to keep clear of the position.

SOUTH ARNE field

The storage tank and top site of **SOUTH ARNE** field is installed at position 56° 04,72' N 004° 13,82' E, connected with a bridge to the platform **South Arne WHPE** (Well Head Platform East) at position 56° 04,693' N 004° 13,85' E. The satellite platform **Syd Arne WHPN** (Well Head Platform North) is installed at the position 56° 05,744' N 004° 13,154' E, where a safety zone of 500 meter is established according to Offshore safety order. **SOUTH ARNE's** tanker loading facility (the **SAL** system), where tankers are loaded at monthly intervals, is located at WGS-84 pos. 56° 05,55' N 004° 15,37' E with a safety zone of 730 m. Mariners have to keep clear of the position.

Info 2.2



Hejre Field The navigational light at the Hejre Platform is out of service.
At the **HEJRE** Platform a safety zone of 500 m has been established around the position: 56°14,809' N - 003°57,534' E.



FOGA ApS
FISHERMENS
INFORMATION
ON OFFSHORE
ACTIVITIES

Trafikhavnskaj 19
 DK-6700 Esbjerg
 Tel.: +45 75 45 11 44

E-Mail: fish.info@foga.dk
 Web page: www.foga.dk

NORTH SEA ACTIVITIES

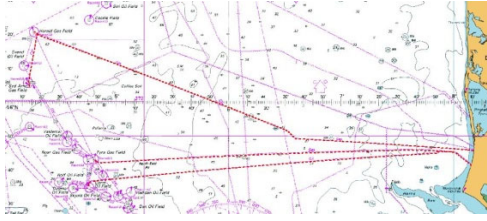
Update of information
Week 38

September 17 - 23, 2024

Next FOGA Info to be distributed September 24, 2024

FOGA ApS has on basis of information received from offshore-operators at the North Sea prepared the following newsletter describing present activities:

Info 3.0



Orsted operates 3 pipelines in the Danish North Sea sector:

- 20" Oil pipeline from **GORM** to Filsø
- 24" Gas pipeline from **SYD ARNE** to Blåbjerg.
(via subsea Y-connection with a split from **HARALD**)
- 30" Gas pipeline from **TYRA E-E** to Kærgård

The gas pipeline is surrounded by a protection zone of 200m on each side of the pipeline pursuant to Danish Maritime Authority Order no. 939 of 27 November 1992 on Protection of Submarine Cables and Pipelines. Within the protection zone anchoring, dredging, boulder removal, and any use of equipment being dragged across the seabed will be prohibited.

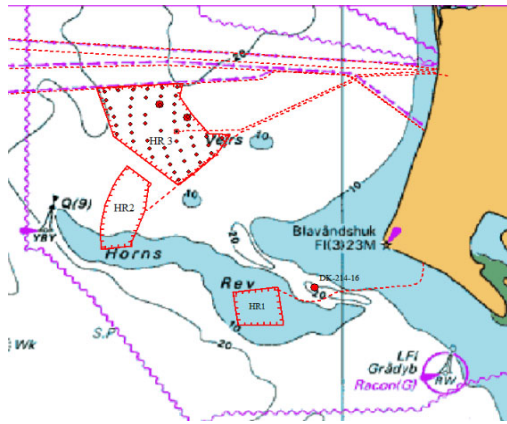
Info 4.0



Danish navigational warning no. DK-214-16

At the below mentioned position a wreck of a submarine has been discovered containing dangerous ammunition. Due to safety reasons, Danish Maritime Authority prohibit all unauthorized fishing, anchoring and diving on and within 100 m radius of the wreck in pos. 55 30,62 N - 007 56,84 E. Violation of the prohibition is punishable by fine or prison.

Info 5.0



Horns Rev 1 & 3 windfarms

HR1: The Crew Transfer Vessels (CTV) **SC AMETHYST** and **SC ONYX** operate at the **Horns Rev 1** OWF.

HR3: The Crew Transfer Vessels (CTV) **NOS MASTER** and **NJORD THUNDER** as well as the vessels **EDT PROTEA** (SOV), **OLYMPIC ARES** (cable layer) and the CTV **LEVANTE** operate at the **Horns Rev 3** OWF.

During the ongoing cable exchange campaign at Horns Rev3, operations on the interconnector to Horns Rev 2 are ongoing while the cable is free laying on the seabed.

Vattenfall OCC Marine Coordination Centre is in operation 24/7 and can be contacted by VHF CH 16, 17 and 10 the MCC can as well be contacted via the duty-phone no.: +45 32 240 243.

Vattenfall OCC (MCC) is monitoring the traffic in the area of all Vattenfall OWF.

SC AMETHYST



NOS MASTER



BORA/LEVANTE



NJORD THUNDER



SC ONYX



OLYMPIC ARES



EDT PROTEA



List of Dropped objects Horns Rev 3 Offshore Windfarm						
Number	Date	Position	Lost asset	Contractor/ Vessel	Reported by:	Comments / Recovered
2	51-10-2019	55.41.36N 007.35.12E	Acoustic logger	CTV Bolder	MCC	Redeployed on same position
3	17-05-2019	55°43,19N 007°39,22E	12,5m BBC hose recovered 37,5m of BBC hose remaining	Maersk Connector	MCC	Approved by DMA until decommissioning phase
4	19-05-2019	55°43,19N 007°39,2E	Remains of a CPS on seabed	Maersk Connector	MCC	Approved by DMA until decommissioning phase
5	17-05-2019	55°43,19N 007°39,22E	Cable recovery near E03, approx. 58m of cable recovered.	Maersk Connector	MCC	Rest of the cable remains on seabed; approved by DMA until decommissioning phase



DAN TYSK & SANDBANK (NorTwin) windfarms

DanTysk and **Sandbank** windfarms are situated within the marked area.

The Crew Transfer Vessels (CTV) **MO1**, **MO8**, **FOB SWATH 6**, **MHO ESBJERG** and **BORA** are operating at the **DanTysk** and **Sandbank** OWP.

The vessel **ARMADA 78-01** is operating at **DanTysk** OWF.

The vessel **ACTA CENTAURUS** (SOV) is operating at the **Sandbank** OWP.

Vattenfall OCC Marine Coordination Centre (MCC) is in operation 24/7 and can be contacted by VHF CH 16, 17 and 10 the MCC can as well be contacted via the duty-phone no.: +45 32 240 243.



Vesterhav Syd and Vesterhav Nord offshore windfarm

Further information can be found on page 5.

FINO 3 - Research Platform

The research platform **FINO 3** was established in 2007/2008 approx. 45 NM West of the island Sylt at the position: 55° 11,7' N 007° 09,5' E.





**FOGA ApS
FISHERMENS
INFORMATION
ON OFFSHORE
ACTIVITIES**

Trafikhavnsvej 19
DK-6700 Esbjerg
Tel.: +45 75 45 11 44
E-Mail: fish.info@foga.dk
Web page: www.foga.dk

NORTH SEA ACTIVITIES

Update of information

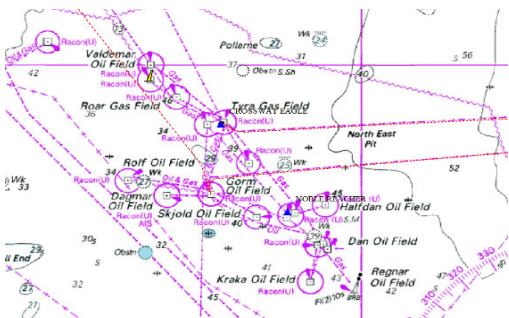
Week 38

September 17 - 23, 2024

Next FOGA Info to be distributed September 24, 2024

FOGA ApS has on basis of information received from offshore-operators at the North Sea prepared the following newsletter describing present activities:

Info 6.0

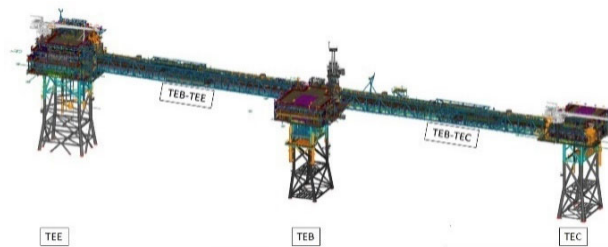
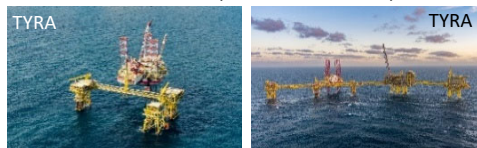


TotalEnergies

TYRA REDEVELOPMENT:

At the TYRA Field two platforms have been established at the below mentioned positions.

TYRA East G: 55° 43,115'N - 004° 47,751'E
TYRA East H: 55° 43,117'N - 004° 47,695'E



Info 7.0

Vessel positions:

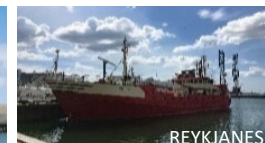
SVERDRUPSON



FORTUNA CRANE



SØLØVEN



ARCTIC HUNTER



FORTUNA PUFFIN



The vessel **FORTUNA CRANE** is waiting on order in Cuxhaven.
The vessel **SVERDRUPSON** is conducting environmental surveys in the North Sea.
The vessel **FORTUNA PUFFIN** is conducting guard duties in the North Sea.
The vessel **REYKJANES** is conducting environmental surveys in the North Sea.
The vessel **ARCTIC HUNTER** is conducting environmental survey in the North Sea.
The vessel **SØLØVEN** is conducting environmental survey in the North Sea.

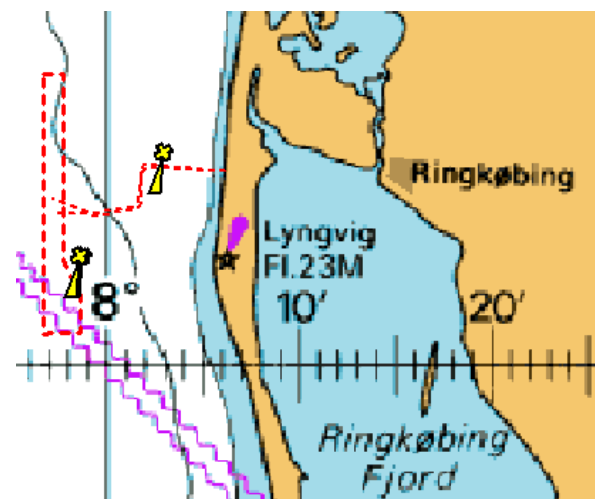
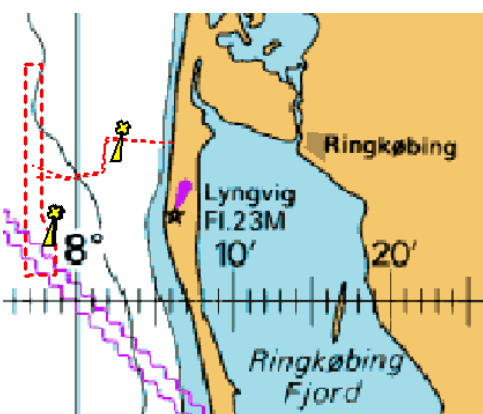
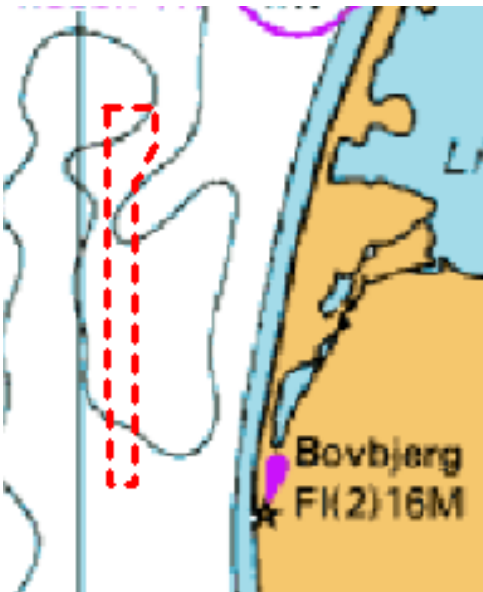
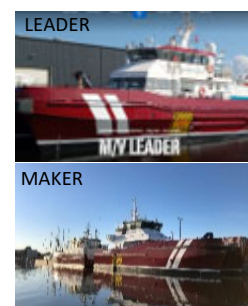
Info 8.0

VATTENFALL

Vesterhav Syd and Vesterhav Nord offshore windfarm

The company Vattenfall has established the offshore windfarms Vesterhav Syd and Vesterhav Nord. The Crew Transfer Vessels (CTV) **NOS LEADER** and **NOS MAKER** operate at Vesterhav Nord & Syd OWF.

1)	56° 05,700'N - 008° 06,180'E	8)	56° 05,700'N - 008° 06,180'E
2)	56° 05,880'N - 008° 01,980'E	9)	56° 05,820'N - 008° 02,100'E
3)	56° 05,760'N - 008° 01,800'E	10)	56° 05,640'N - 008° 01,860'E
4)	56° 04,740'N - 008° 01,620'E	11)	56° 04,680'N - 008° 01,740'E
5)	56° 04,620'N - 008° 01,320'E	12)	56° 04,560'N - 008° 01,500'E
6)	56° 04,440'N - 007° 59,400'E	13)	56° 04,380'N - 007° 59,520'E
7)	56° 04,920'N - 007° 57,180'E	14)	56° 04,440'N - 007° 59,040'E
		15)	56° 04,500'N - 007° 57,240'E



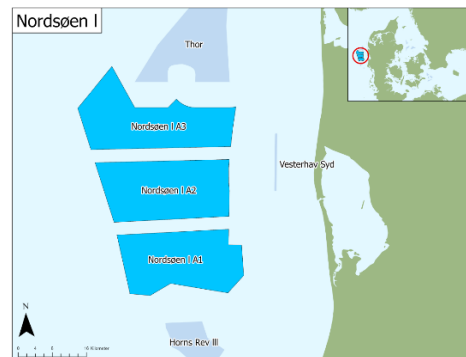
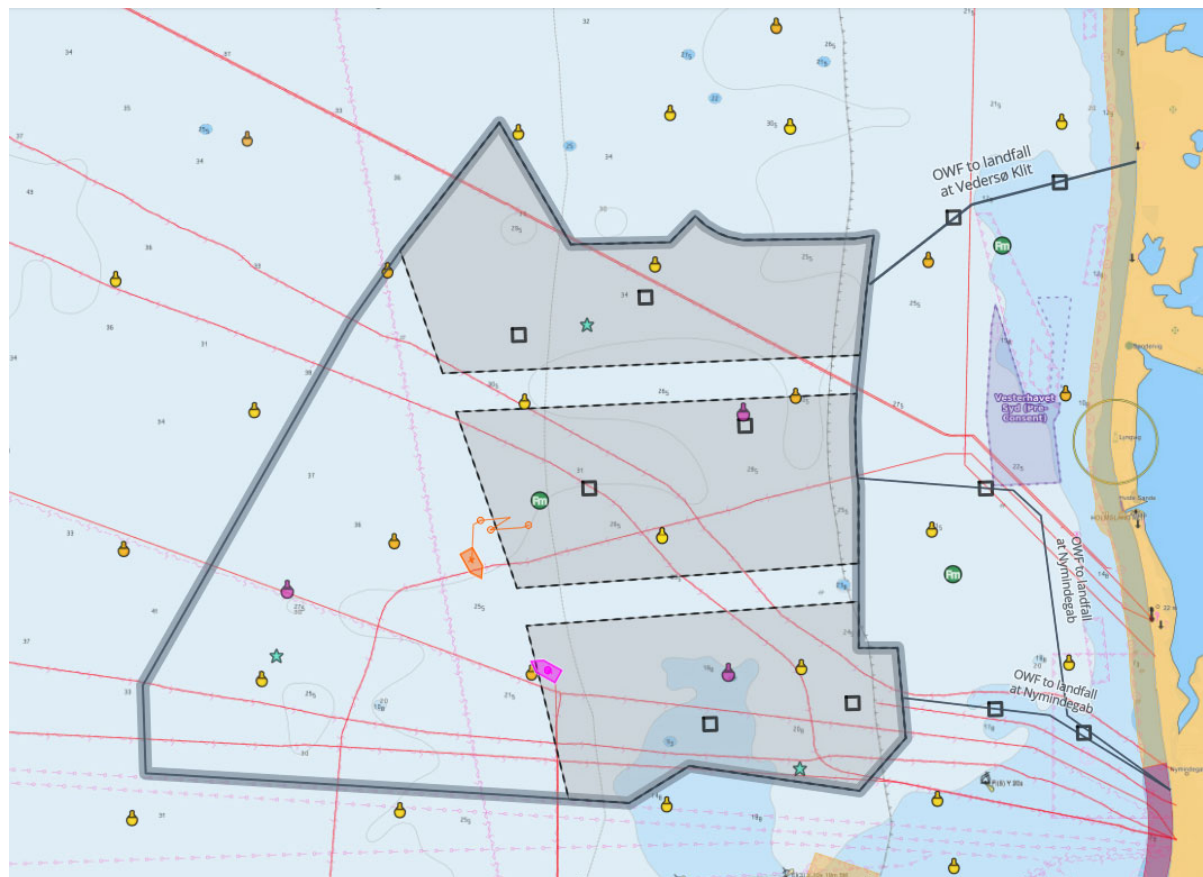


FOGA ApS has on basis of information received from offshore-operators at the North Sea prepared the following newsletter describing present activities:

Info 9.0

ENERGINET

Energinet are conducting surveys in the waters West of Hvide Sande.

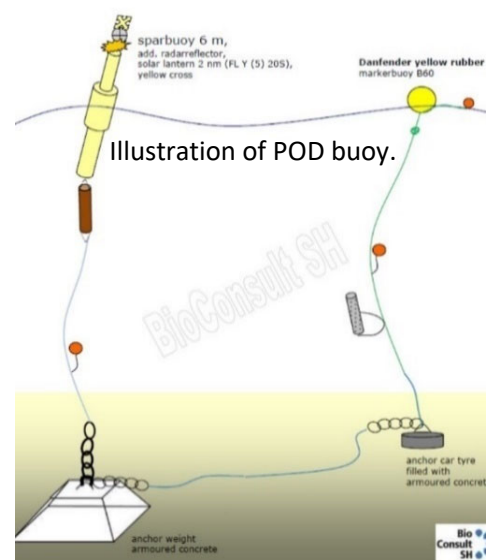


Energinet has deployed a number of buoys at the below mentioned positions:

Pos_ID	Mooring	Latitude	Longitude
HR3_1	Acoustic Release	55° 42.8844' N	7° 36.468' E
HR3_2	Acoustic Release	55° 38.9118' N	7° 40.3476' E
HR3_3/NS23	Acoustic Release	55° 42.0702' N	7° 42.8472' E
HR3_4_S	Sparbuoy	55° 44.1342' N	7° 47.4366' E
HR3_5_S	Sparbuoy	55° 43.0236' N	7° 51.1368' E
HR3_6_S	Sparbuoy	55° 44.9118' N	7° 54.0678' E
NS1_S	Sparbuoy	55° 46.5702' N	6° 31.6026' E
NS2_S	Sparbuoy	55° 52.4862' N	6° 41.4606' E
NS3_S	Sparbuoy	55° 41.0508' N	6° 42.0948' E
NS4_S	Sparbuoy	55° 46.947' N	6° 51.914' E
NS5_S	Sparbuoy	55° 58.3746' N	6° 51.2862' E
NS6_S	Sparbuoy	56° 9.8052' N	6° 50.649' E
NS7_S	Sparbuoy	55° 41.4036' N	7° 2.3454' E
NS8_S	Sparbuoy	55° 52.8738' N	7° 1.653' E
NS9_S	Sparbuoy	56° 4.2606' N	7° 1.1724' E
NS10_S	Sparbuoy	56° 15.699' N	7° 0.5958' E
NS11_S	Sparbuoy	55° 47.2776' N	7° 12.1782' E
NS12_S	Sparbuoy	55° 58.6998' N	7° 11.739' E

Pos_ID	Mooring	Latitude	Longitude
NS13_S	Sparbuoy	56° 10.149' N	7° 11.2224' E
NS14_S	Sparbuoy	56° 21.5262' N	7° 10.5306' E
NS15_S	Sparbuoy	55° 41.7066' N	7° 22.5954' E
NS16_S	Sparbuoy	55° 53.1222' N	7° 22.1184' E
NS17_S	Sparbuoy	56° 4.6296' N	7° 21.6066' E
NS18_S	Sparbuoy	56° 15.99498' N	7° 21.13998' E
NS19_S	Sparbuoy	55° 47.5308' N	7° 32.3634' E
NS20_S	Sparbuoy	55° 58.9602' N	7° 31.9902' E
NS20_S	Sparbuoy	55° 58.968' N	7° 31.9716' E
NS21_S	Sparbuoy	56° 10.407' N	7° 31.4964' E
NS22_S	Sparbuoy	56° 21.836' N	7° 31.197' E
NS24_S	Sparbuoy	55° 53.3646' N	7° 42.4986' E
NS25_S	Sparbuoy	56° 4.8606' N	7° 42.078' E
NS27_S	Sparbuoy	55° 36.312' N	7° 53.1102' E
NS28_S	Sparbuoy	55° 47.7672' N	7° 52.7904' E
NS29_S	Sparbuoy	55° 59.2038' N	7° 52.4364' E
NS30_S	Sparbuoy	56° 10.582' N	7° 52.12698' E

Pos_ID	Mooring	Latitude	Longitude
NS31_S	Sparbuoy	56° 22.0614' N	7° 51.7884' E
NS32_S	Sparbuoy	55° 42.117' N	8° 3.0702' E
NS33_S	Sparbuoy	55° 53.5614' N	8° 2.8008' E
NS34_S	Sparbuoy	56° 4.959' N	8° 2.523' E
NS35_S	Sparbuoy	56° 16.431' N	8° 2.2134' E
T2_S	Sparbuoy	56° 16.8' N	7° 32.6274' E
T3/NS26_S	Sparbuoy	55° 32.1276' N	6° 40.2746' E
T3/NS26_S	Sparbuoy	56° 16.2288' N	7° 41.6838' E
T4_S	Sparbuoy	56° 20.43' N	7° 40.65' E
HR3_noise	Acoustic Release	55° 41.3568' N	7° 35.1048' E





**FOGA ApS
FISHERMENS
INFORMATION
ON OFFSHORE
ACTIVITIES**

Trafikhavnskaj 19
DK-6700 Esbjerg
Tel.: +45 75 45 11 44
E-Mail: fish.info@foga.dk
Web page: www.foga.dk

NORTH SEA ACTIVITIES

**Update of information
Week 38**

September 17 - 23, 2024

Next FOGA Info to be distributed September 24, 2024

FOGA ApS has on basis of information received from offshore-operators at the North Sea prepared the following newsletter describing present activities:

Info 10.0

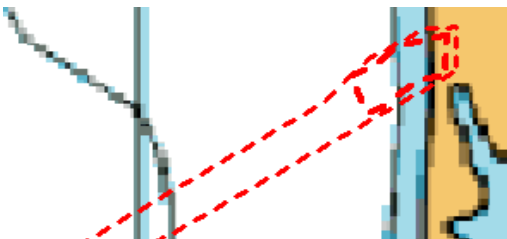


A near shore geotechnical survey has commenced 7th September 2024 within the below area with following vessels: Tug **LIFTMOOR**, Jack-up **SANDPIPER** and RIB **CATALINA** (For crew change).

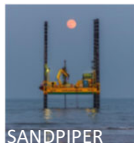
In the same area, an UXO Id & C (Unexploded Ordnance Identification and Clearance) Campaign is expected to commence in the last week of September. The UXO Id&C Campaign will be performed by a 4-point mooring vessel and RIB boats as well as the diving support vessel **HBC SUPPORTER**. There will be diving activity in combination with this campaign. The port of Thorsminde will be the base port of the operations.

Mariners are requested to keep well clear of these operations and the fishery are requested to keep the area clear of fishing gear.

A wave rider buoy has been deployed at the position 56°22.18N, 007°22.9E and a marker buoy at the position 56°22.18N, 007°22.18E. Mariners are requested to keep clear of the buoys.



LIFTMOOR



HBC SUPPORTER



Near Shore Survey			Near Shore Survey		
No	Latitude	Longitude	No	Latitude	Longitude
1	56° 27.734' N	8° 07.481' E	6	56° 26.735' N	8° 05.998' E
2	56° 27.572' N	8° 06.300' E	7	56° 27.081' N	8° 06.738' E
3	56° 27.287' N	8° 05.714' E	8	56° 27.161' N	8° 07.433' E
4	56° 27.127' N	8° 05.110' E	9	56° 27.734' N	8° 07.481' E
5	56° 26.595' N	8° 05.534' E			