



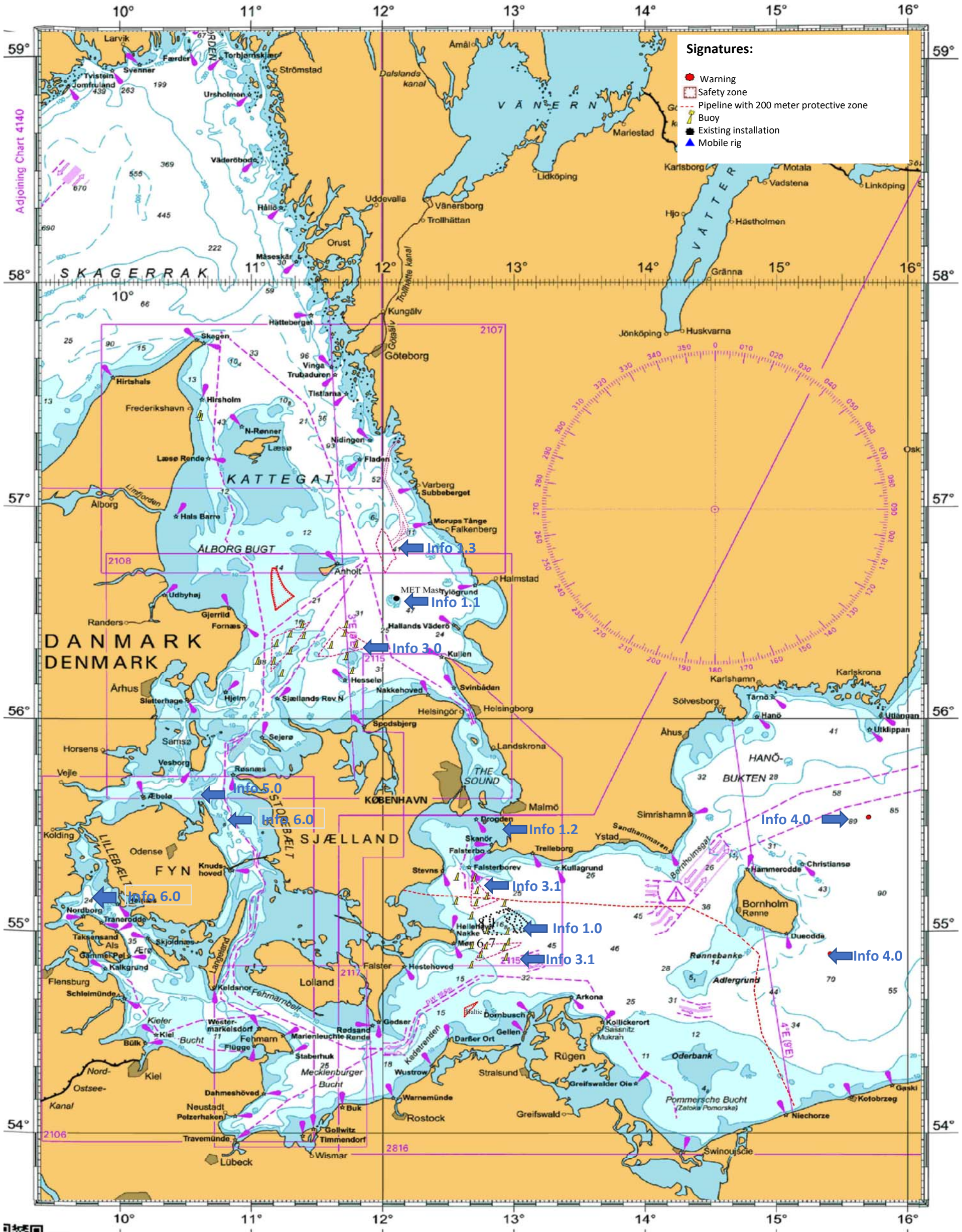
FOGA ApS  
FISHERMENS  
INFORMATION  
ON OFFSHORE  
ACTIVITIES

Trafikhavnskej 19  
DK-6700 Esbjerg  
Tel.: +45 75 45 11 44  
E-Mail: fish.info@foga.dk  
Web page: www.foga.dk

# BALTIC SEA ACTIVITIES

Week 38  
September 19, 2024

FOGA ApS has on basis of information received from offshore operators in the Baltic Sea prepared the following newsletter describing present activities:

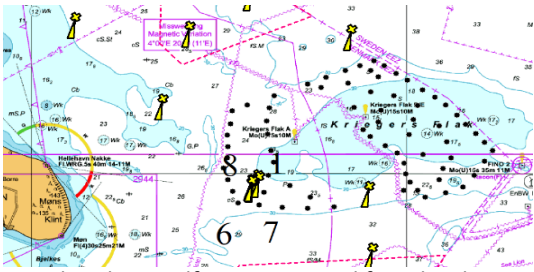






FOGA ApS has on basis of information received from offshore operators at the Baltic Sea prepared the following newsletter describing present activities:

### INFO 1.0



#### VATTENFALL

The offshore windfarm **Danish Kriegers Flak** is situated in the Danish part of the Baltic Sea. The Crew Transfer Vessels (CTV) **TRAVELLER, ATTENDER & BOLDER** operates in the Kriegers Flak area.

**Vattenfall OCC Marine Coordination Centre** is in operation 24/7 and can be contacted by VHF CH 16 and 10, as well MCC can be contacted via duty-phone no.: +45 32 240 243.

**Vattenfall OCC (MCC)** is monitoring the traffic in the area of all Vattenfall OWF.

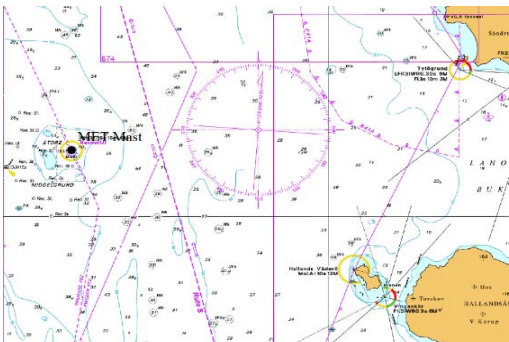
The **cable is surrounded by a protection zone of 200m** on each side of the cable pursuant to Danish Maritime Authority Order no. 939 of 27 November 1992 on Protection of Submarine Cables and Pipelines. Within the protection zone anchoring, dredging, boulder removal, and any use of equipment being dragged across the seabed will be prohibited.

Within the windfarm a seaweed farm has been established. The site is marked by 4 yellow buoys. The lines and buoys are in the surface in the seaweed farm at Danish Kriegers Flak and navigation within the marked area should be avoided.

- 1, 54°58.89473502'N, 012°47.69797624'E
- 6, 54°58.54310618'N, 012°47.36581880'E
- 7, 54°58.64355668'N, 012°47.20962837'E
- 8, 54°58.79427409'N, 012°47.85416315'E



### INFO 1.1



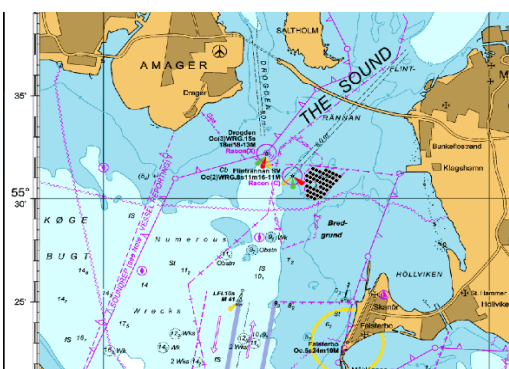
#### Store Middelgrund - MET Mast

**The navigation light of the MET Mast is out of service.**

On the position: 56°33.7N - 012°06.3E a MET mast is situated on a platform 7 m above mean sea level. The complete height of both mast and platform is approx. 120 m above mean sea level. The construction can be seen at the photo.



### INFO 1.2



The offshore windfarm **Lillgrund** is located approx. 10 km off the coast of Southern Sweden, just South of the Öresund Bridge. The Crew Transfer Vessel (CTV) **BRINGER** operates in the Lillgrund area.

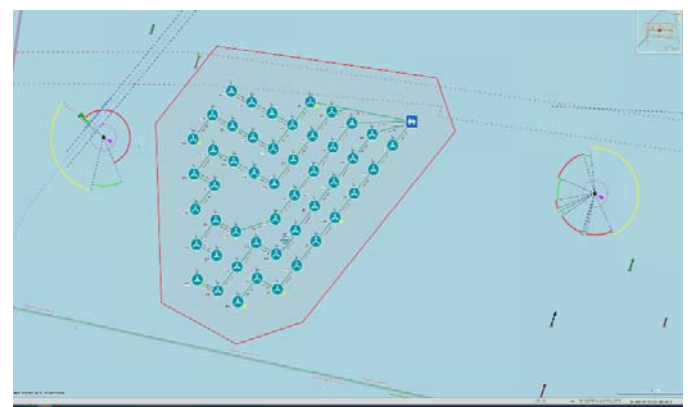
The diving support vessel **SOUND HORIZON** will start operating in the Lillgrund OWF.

The small craft **MEO62** deploys fishing gear in the area of Lillgrund OWF.

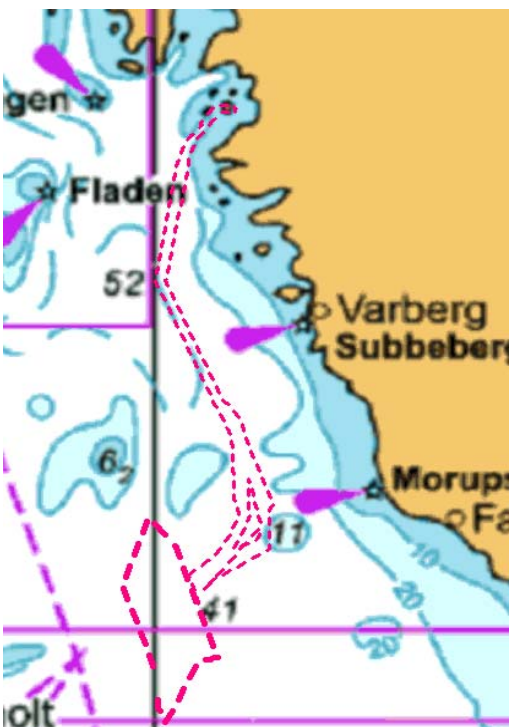


**Vattenfall OCC Marine Coordination Centre** is in operation 24/7 and can be contacted by VHF CH 16 and 10, as well MCC can be contacted via duty-phone no.: +45 32 240 243.

**Vattenfall OCC (MCC)** is monitoring the traffic in the area of all Vattenfall OWF.



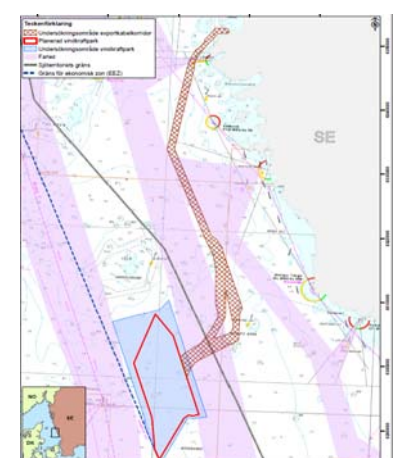
### INFO 1.3



The company Vattenfall is expected to conduct geophysical and geotechnical surveys in the waters where the offshore windfarm **Kattegat Syd** is to be established. The survey consists of both towed equipment and stationary surveys. The surveys are conducted by the following vessels: **FUGRO FRONTIER, FUGRO RESOLVE** and **KOMMANDOR ORCA**. The **FUGRO FRONTIER** will be towing cables of approx. 200 meters. The vessels **FUGRO RESOLVE** and **KOMMANDOR ORCA** are stationary when conducting their surveys.

Mariners are requested to keep well clear of these operations as the vessels have restricted maneuverability.

The survey will take place between September 1, and December 31, 2024.







**FOGA ApS**  
**FISHERMENS**  
**INFORMATION**  
**ON OFFSHORE**  
**ACTIVITIES**

Trafikhavnskaj 19  
 DK-6700 Esbjerg  
 Tel.: +45 75 45 11 44  
 E-Mail: fish.info@foga.dk  
 Web page: www.foga.dk

# BALTIC SEA ACTIVITIES

**Update of information**  
**Week 38**

**September 19 - 25, 2024**

Next FOGA Info to be distributed, September 26, 2024

FOGA ApS has on basis of information received from offshore operators at the Baltic Sea prepared the following newsletter describing present activities:

## INFO 2.0



Vessel positions:

The vessel **FORTUNA KINGFISHER** is conducting environmental surveys in the Baltic Sea.  
 The vessel **ARNE TISELIUS** is conducting environmental surveys in the Baltic Sea.  
 The vessel **FORTUNA ROBIN** is conducting environmental surveys in the Baltic Sea.  
 The vessel **HYDROGRAF** is conducting environmental surveys in the Baltic Sea.  
 The vessel **VERA II** is acting as guard vessel in the Baltic Sea.  
 The vessel **ARCTIC OCEAN** is conducting surveys in inner Danish waters.

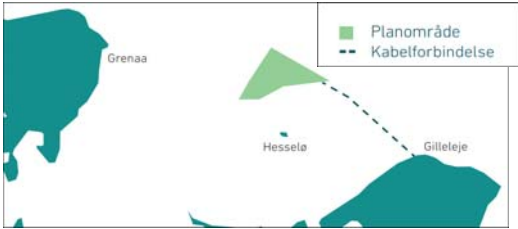


## INFO 3.0



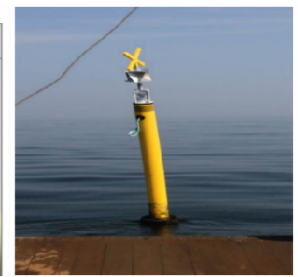
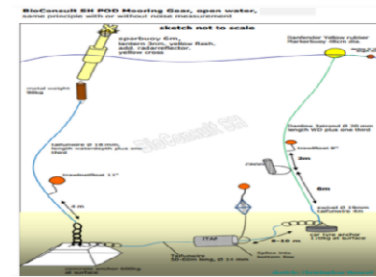
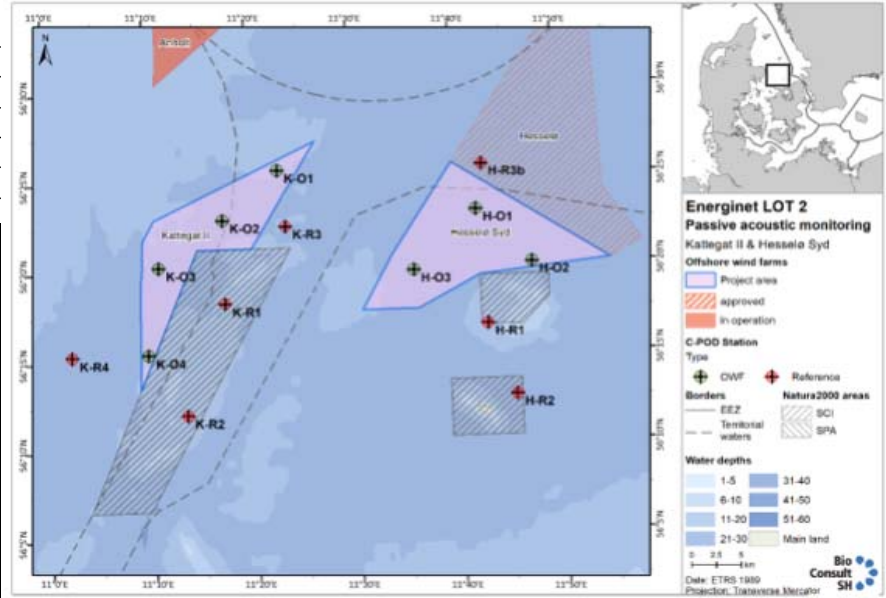
Eltransmission

Energinet has deployed a number of CPOD stations in the areas 1 - 2.



1: Kattegat II	2: Hesselø Syd
56°27.182'N, 011°26.513'E	56°25.711'N, 011°39.922'E
56°22.647'N, 011°09.375'E	56°20.157'N, 011°55.063'E
56°13.298'N, 011°08.839'E	56°17.609'N, 011°36.317'E
56°21.118'N, 011°20.251'E	56°17.666'N, 011°30.117'E

Typ	Name	Area	Lat (D°)	Long (D°)	Lat (D° M')	Long (D° M')
OWF	K-O1	Kattegat2	56,42612	11,380518	56° 25.567	11° 22.831' E
OWF	K-O2	Kattegat2	56,38063	11,289414	56° 22.838	11° 17.365' E
OWF	K-O3	Kattegat2	56,33763	11,18325	56° 20.258	11° 10.995' E
OWF	K-O4	Kattegat2	56,25634	11,162913	56° 15.380	11° 09.775' E
Reference	K-R1	Kattegat2	56,30273	11,289738	56° 18.164	11° 17.384' E
Reference	K-R3	Kattegat2	56,37358	11,391245	56° 22.415	11° 23.475' E
Reference	K-R2	Kattegat2	56,19923	11,223871	56° 11.954	11° 13.432' E
Reference	K-R4	Kattegat2	56,25571	11,038729	56° 15.342	11° 02.324' E
OWF	H-O3	Hesselø Syd	56,32948	11,598312	56° 19.769	11° 35.899' E
OWF	H-O2	Hesselø Syd	56,33435	11,791024	56° 20.061	11° 47.461' E
OWF	H-O1	Hesselø Syd	56,38455	11,702416	56° 23.073	11° 42.145' E
Reference	H-R1	Hesselø Syd	56,27766	11,715596	56° 16.659	11° 42.936' E
Reference	H-R2	Hesselø Syd	56,21092	11,759293	56° 12.655	11° 45.558' E
Reference	H-R3	Hesselø Syd	56,42688	11,713746	56° 25.613	11° 42.825' E

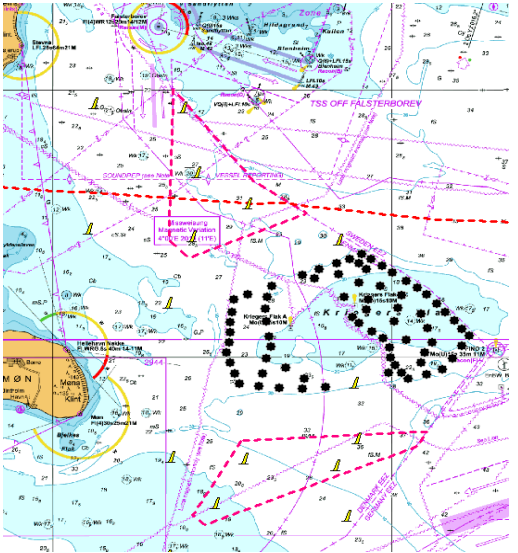


## INFO 3.1



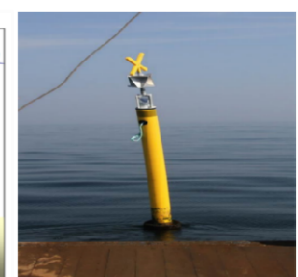
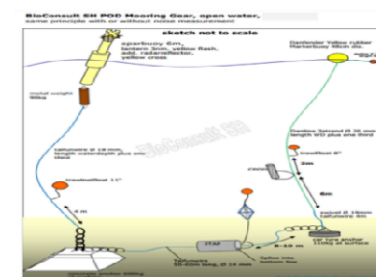
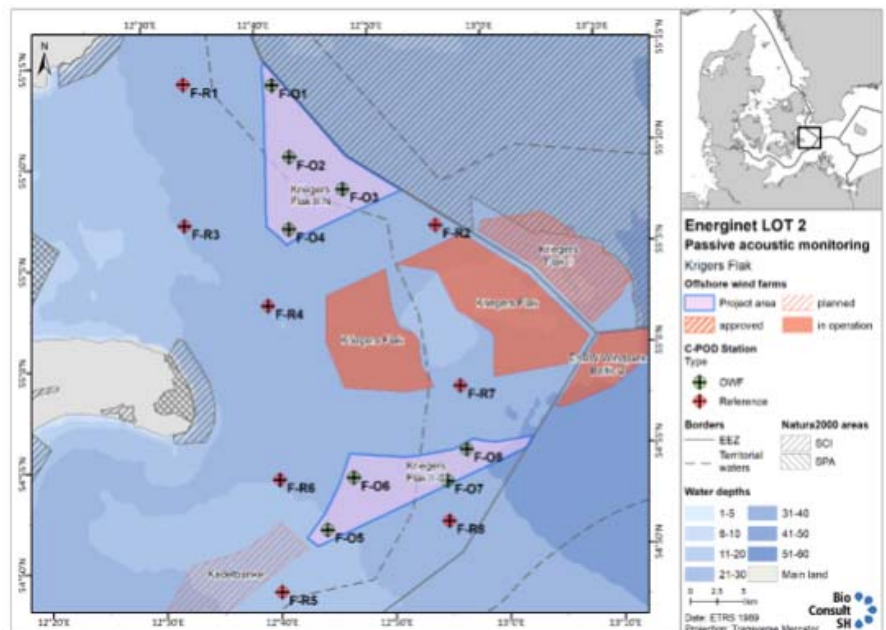
Eltransmission

Energinet has deployed a number of CPOD stations in the areas 3 - 4.



3: Kriegers Flak II Nord	4: Kriegers Flak II Syd
55°14.829'N, 12°40.754'E	54°55.018'N, 13°02.111'E
55°08.123'N, 12°52.360'E	54°50.715'N, 12°43.424'E
55°05.714'N, 12°42.013'E	54°53.725'N, 12°45.553'E
55°06.685'N, 12°40.304'E	54°55.326'N, 12°56.524'E

Typ	Name	Area	Lat (D°)	Long (D°)	Lat (D° M')	Long (D° M')
OWF	F-O1	Kriegers Flak II - N	55,22768	12,690192	55° 13.661	12° 41.412' E
OWF	F-O4	Kriegers Flak II - N	55,10812	12,704763	55° 06.487	12° 42.286' E
OWF	F-O3	Kriegers Flak II - N	55,13894	12,786561	55° 08.336	12° 47.194' E
OWF	F-O2	Kriegers Flak II - N	55,16774	12,710919	55° 10.065	12° 42.655' E
Reference	F-R2	Kriegers Flak II - N	55,10518	12,920309	55° 06.311	12° 55.219' E
Reference	F-R3	Kriegers Flak II - N	55,11517	12,551529	55° 06.910	12° 33.092' E
Reference	F-R1	Kriegers Flak II - N	55,23206	12,559632	55° 13.924	12° 33.578' E
Reference	F-R4	Kriegers Flak II - N	55,04585	12,668195	55° 02.751	12° 40.092' E
OWF	F-O5	Kriegers Flak II - S	54,85853	12,738946	54° 51.512	12° 44.337' E
OWF	F-O8	Kriegers Flak II - S	54,91879	12,948089	54° 55.127	12° 56.885' E
OWF	F-O7	Kriegers Flak II - S	54,89352	12,917329	54° 53.611	12° 55.040' E
OWF	F-O6	Kriegers Flak II - S	54,90039	12,780795	54° 54.023	12° 46.848' E
Reference	F-R6	Kriegers Flak II - S	54,90191	12,672705	54° 54.114	12° 40.362' E
Reference	F-R8	Kriegers Flak II - S	54,8603	12,917251	54° 50.786	12° 55.965' E
Reference	F-R7	Kriegers Flak II - S	54,97153	12,943873	54° 58.292	12° 56.632' E
Reference	F-R5	Kriegers Flak II - S	54,809	12,667616	54° 48.540	12° 40.057' E







**FOGA ApS  
FISHERMENS  
INFORMATION  
ON OFFSHORE  
ACTIVITIES**

Trafikhavnsvej 19  
DK-6700 Esbjerg  
Tel.: +45 75 45 11 44

E-Mail: fish.info@foga.dk  
Web page: www.foga.dk

# BALTIC SEA ACTIVITIES

**Update of information**

**Week 38**

**September 19 - 25, 2024**

Next FOGA Info to be distributed, September 26, 2024

FOGA ApS has on basis of information received from offshore operators at the Baltic Sea prepared the following newsletter describing present activities:

## INFO 4.0

### Denmark. The Baltic Sea. Bornholm NE. Gas leak. Restricted area.

**Until further notice**, due to obstructions on the seabed in connection with damage of the gas pipeline, a **restricted area** has been established within a distance of 1nm from positions 1) and 2). Anchoring, fishing and working on the seabed is not recommended in the area.

1) 55° 32.117'N - 015° 42.169'E

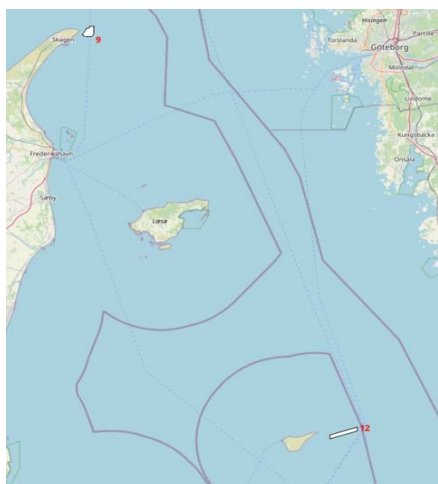
2) 55° 32.017'N - 015° 41.959'E

### Denmark. The Baltic Sea. Bornholm SE. Gas leak. Restricted area.

**Until further notice**, due to obstructions on the seabed in connection with damage of the gas pipeline, a **restricted area** has been established within a distance of 1nm from positions 1) and 2). Anchoring, fishing and working on the seabed is not recommended in the area.

1) 54° 52.623'N - 015° 24.529'E

## INFO 5.0



**GEUS**



From the vessel **ARCTIC OCEAN** the company **GEUS** (Geological Survey of Denmark and Greenland) is conducting Resource surveys for the Danish Environmental Protection Agency in Kattegat and inner Danish Waters. From end of week 37 to week 39, the vessel will be working in Bay of Koege #44, North of Hundested # 18. Northern Great belt and north of Fyn # 25-26-27-28. Bay of Aarhus # 20-21-20. East of Anholt # 12. Skaw # 09. The vessel is listening on VHF ch. 16. During week 39 the work is expected to continue in the North Sea. The numbers on the chart sections refers the work area.



## INFO 6.0



### Offshore Wind Turbines and dialogue about eventual value loss for commercial fishermen in the Little Belt and Great Belt.

European Energy is developing the offshore wind turbine projects Little Belt South Wind Farm and Jammland Bugt Nearshore Wind Farm in the Great Belt respectively. It is expected that the offshore wind turbines will be established and put into operation before 2029.

In this connection, European Energy wishes to invite active commercial fishermen in the belt region to dialogue in order to clarify and negotiate compensation for any loss of value for commercial fishing in relation to the offshore wind turbine projects. The Danish Energy Agency has announced that negotiations must be carried out individually with each fisherman. Inquiries can be directed to: [Offshorewind@europeanenergy.com](mailto:Offshorewind@europeanenergy.com), after which email will be confirmed.

More information regarding the negotiations will only be forwarded when we believe we have identified all fishermen.

#### Jammerland Bay offshore wind farm

Jammerland Bay Nearshore wind farm is an offshore wind and turbine project located northwest of Reersø with over 6 km to the nearest coast.

There are several possible scenarios for the project, which is expected to consist of 16 offshore wind turbines with a capacity of up to 15 MW each. It may also consist of up to 23 offshore wind turbines.

The wind turbines are expected to be able to cover the electricity consumption of around 240,000 households.

#### Lillebælt Syd Wind Turbine park

Lillebælt Syd is an offshore wind turbine project approx. 4 km northeast of Als and 6 km from Helnæs. The project will consist of 11 wind turbines, with a total height of 256 meters.

When the offshore wind turbines are installed, they will be able to produce 160 MW of green electricity, which can supply up to 140,000 Danish households. The power from the offshore wind turbines will be brought ashore at Als and connected to Energinet's high-voltage station at Svenstrup.

